

Explore - Play - Discover Utah State Parks

WASATCH MOUNTAIN STATE PARK GEOCACHING ADVENTURES

TRADITIONAL CACHES

The listed coordinates will take you to the container.

WMSP: Huber Grove- N 40° 32.542 W 111° 29.948

WMSP: Pine Creek- N 40° 32.666 W 111° 29.201

MULTI-CACHES

The listed coordinates will take you to your first clue tag.

Welcome to WMSP: N 40° 31.974 W 111° 29.436

This course is designed to be an intro to multi-caching; it is much shorter than the others and the tags/cache are easier to spot. This course is recommended for younger kids and new Geocachers. You will be looking for 2 coordinate tags and the final container.

Nature Experience: N 40° 32.604 W 111° 29.389

This course will take you to some great nature areas, be sure to bring your camera. This course is about a 3-mile round trip hike over even terrain with minimal elevation changes. You will be looking for 4 coordinate tags and the final container.

Tour of WMSP: N 40° 32.598 W 111° 30.031

There is a lot to see and do at Wasatch Mountain State Park, and this course will take you to some great spots in the park. Driving to the various locations is recommended, and at some locations, short hikes may be required. You will be looking for 8 coordinate tags and the final container.

**REMEMBER TO LOG YOUR VISITS AT:
WWW.GEOCACHING.COM**

Explore - Play - Discover Utah State Parks

GEOCACHING AT WASATCH MOUNTAIN STATE PARK

Geocaching is a high-tech treasure hunt using a global positioning satellite (GPS) unit.

People from all age groups can participate in Geocaching, including families with children, students, adults, and retirees. Geocaching is a great way to bring friends and family together while having fun outdoors.

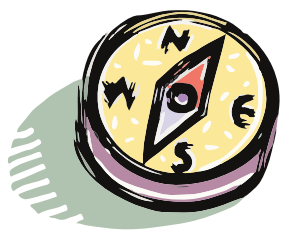
Pair Geocaching with Camping, Hiking, or Biking or any other activity for your next great adventure!

Don't have a GPS? Rent a unit for \$5.00 at the Park Visitor Center



WHEN DID GEOCACHING BEGIN?

Geocaching had its birth in May 2000 after 24 satellites worldwide were upgraded, providing a tenfold improvement in capabilities of existing GPS units. Computer consultant Dave Ulmer tested the improvement by hiding a navigational target



in the woods. He called it the “Great American GPS Stash Hunt,” and posted it to an Internet GPS users’ group.

Fellow GPS enthusiasts found his stash, hid and posted GPS coordinates for their own caches, and a movement was born!

TYPES OF GEOCACHES

Traditional caches are the original Geocache type consisting of at least a container and a logbook. The coordinates given are the exact location of the cache.

Multi-caches involve multiple locations, hints found at the initial location(s) lead to the final location, a physical container.

For these multi-caches, the hints are in the form of green dog tags with the next set of coordinates on them.

**FOR MORE INFORMATION ON THE
SPORT OF GEOCACHING VISIT:
WWW.GEOCACHING.COM**

THINGS TO REMEMBER WHEN GEOCACHING

1. Remember that the GPS unit is not 100% accurate. When you are close (0-20 ft) start looking for the coordinate tag/cache container.
2. You must hold the GPS flat, as well as be moving for the GPS to give you accurate directions.
3. When hunting for a Geocache try to stay on trails as much as possible, all caches/tags are placed close to trails and roads to reduce trailblazing. **Please stay off the golf courses.**
4. Always respect other people and property when Geocaching.
5. Be sure to return caches and tags back to the way you found them, if you feel that something is out of place tell the park staff.
6. Some of these courses involve extended hikes, be sure to bring water, wear good shoes, and dress for the weather.
7. Remember, geocaches/tags are hidden in plain sight and never buried, but they are often cleverly camouflaged.
8. When you find these geocaches feel free to take a free gift. Remember though, outside of these caches, it is courtesy to leave something of equal or greater value if you take something.
9. If you see any garbage pick it up and put it in a garbage can
10. Happy Geocaching