

# 2021 Uinta-Wasatch-Cache

## MOTORIZED PROGRAM IMPLEMENTATION

This grant project supported four main elements of overall motorized recreation management. First completing routine maintenance of 456 miles of trail, as well as heavy trail maintenance and reroutes on specifically identified trails. Second was bringing Enterprise Trails to complete an Equipment Training and to provide mentorship on several heavy maintenance projects. Twelve students received training that will build capacity on the Forest. Third was continued efforts to improve signage and information. Fourth was implementing travel management.



This project was made possible through Recreational Trails Program funding, Utah State OHV Fiscal Incentive Grant Funding, Forest Service funding, partner and volunteer contributions.



# HKRD: General Maintenance

Pictures show down tree removal on Hoyts Peak, Murdock OHV, and Soapstone.

Before



After





# PGRD: General Maintenance

Examples of drainage work and hazard tree removal.



Before



After





# EVMV: General Maintenance

Scenic overlook downed tree removal.



Before



After



# SLRD: Stansbury Front Trail

Drainage work and reroute around a steep and eroded section of trail. Enterprise Trails was on site for mentoring of employees in constructing trail with equipment.



Before



After





# SLRD: Mueller Park

Heavy tread work and social route closure.



Before



After

Before



After





# Logan RD: Tilda Springs

Heavy tread work and drainage improvements.

Before



After





# SFRD: Burned Trail Rehab.

Examples of heavy brushing completed on trails that have excessive growth after the Bald and Pole Mountain fires and down tree removal.



Before



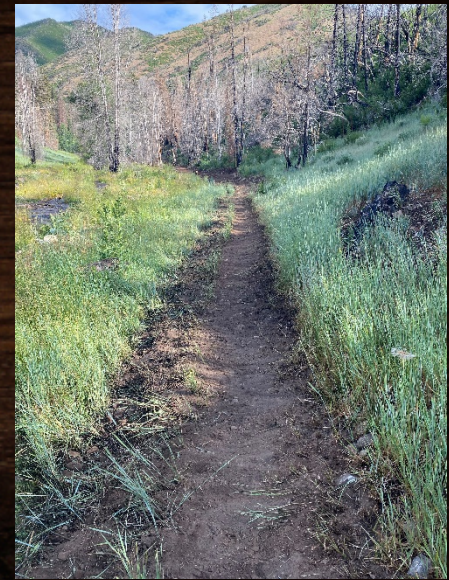
After





# SFRD: Heavy Tread

Examples of heavy tread completed on Bennie Creek and Summit trails, Jones Ranch, to re-establish and define tread impacted by the Pole and Bald Mountain Fires.



Before

After



# SFRD: Sawmill-Nebo Creek

Heavy tread work and minor trail realignments to redefine trail tread after the Pole and Bald Mountain fires and subsequent flooding events. Enterprise Trails was on site to assist with technical sections and mentor employees.



After



Before





# SFRD: Sawmill-Nebo Creek cont.

Before



After





# SFRD: Bennie Creek Trail

Heavy tread work and minor trail realignments to redefine trail tread after the Pole and Bald Mountain fires and subsequent flooding events. Enterprise Trails was on site to assist with technical sections and mentor employees.

Before



After





# HKRD: Little South Fork

Section of trail that was rerouted to avoid the section of trail that was used as a skid trail and improve drainage.





# EVMV: Wolverine Trail

Heavy tread repairs and drainage work.

Before



After





# EVMV: Wolverine Trail

Boardwalk repairs.



After

Before



After



# HKRD: Travel Management

Examples of travel management signage added and winter education patrols (completed with RTP portion of funding).





# HKRD: Kiosks

Six new kiosks were installed, 9 panels were created for summer kiosks, and 7 for winter kiosks. Shown are new kiosks at Clyde Creek, Strawberry River, Coop Creek, and Lake Creek.





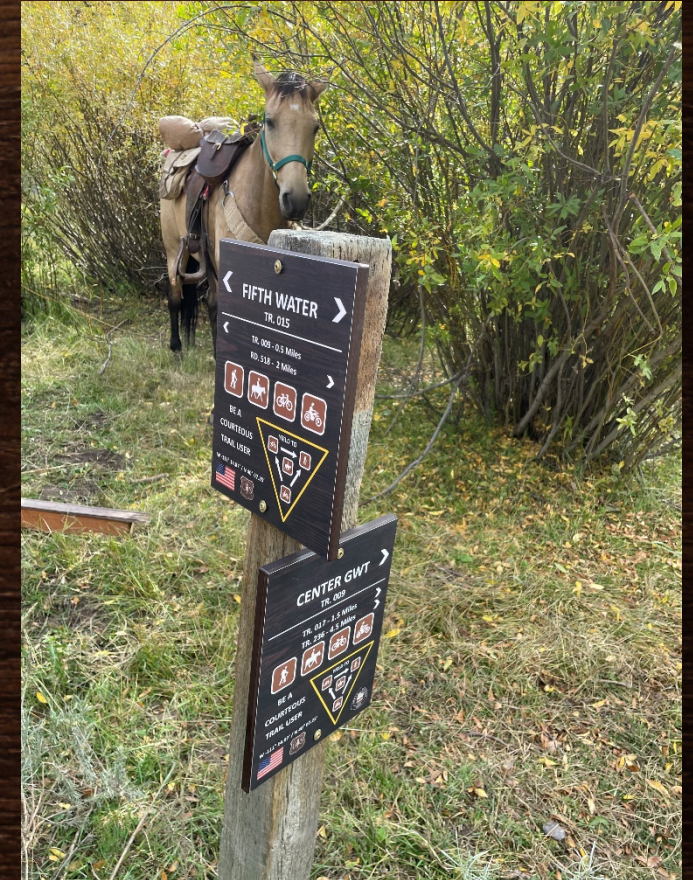
# North Zone: Signs

Examples of signs and kiosks installed on the Ogden and Logan Ranger Districts.





# SFRD: Trailhead and trail junction signs





# Forest Equipment Training

The training included classroom time, an exercise on flat ground to build proficiency and then progressed to side hill construction.

This training provided an opportunity to work with and learn from Enterprise Trails as well as experienced operators on the Forest.





## **2021 UWC Motorized Program Grant Accomplishment Summary**

This grant project supported four key elements of the overall management of motorized recreation on the Uinta-Wasatch-Cache National Forest. The first element was completing maintenance on priority motorized trails across the Forest. This included both single-track and OHV routes on the five zones of the Forest: Logan-Ogden, Evanston-Mountain View, Heber-Kamas, Salt Lake, and Pleasant Grove-Spanish Fork. Each zone completed a mix of general and heavy trail maintenance on identified trails. 456 miles of general maintenance was completed including corridor clearing, light tread and drainage work, as well as minor sign and trail structure maintenance. Heavy maintenance included more in-depth processes, such as reestablishing the tread prism, heavy brushing to re-establish trail corridors, installing new drainage structures or grade reversals, repairing boardwalk and/or repairing switchbacks or implementing minor reroutes. (See the attached later part of document and SS that shows the specific trails that were worked on as part of this project).

The second element that was achieved was an equipment training. Well trained employees are critical to completing quality maintenance, reroutes, and trail construction. As part of this project, we brought FS Enterprise Trails employees to teach a training specifically tailored to completing work on motorized trails with heavy equipment. We were very short on employees with this training and skill set and this built capacity across the Forest. The training included some class time and time spent on the ground using equipment to complete work.

The third element was improvements to trail head and trail junction signing and information available at kiosks on the Forest. This component continued the phased signing projects on the Spanish Fork District (trailhead and junction signs) and the Heber-Kamas District (kiosks for summer and winter). This has been a priority for the Forest to improve signage in an effort to keep users on the correct trails, increase awareness of regulations, improve visitor safety and increase trail etiquette messaging.

The fourth element was continuing with summer and winter travel management on the Heber-Kamas District. In person interactions and a field presence are a key component to managing motorized recreation in this area.

This project included Forest Service funding, Federal Highway Funding through RTP, Utah State Parks and Recreation OHV funding and support, as well as multiple volunteers, groups and associations.



## 2021 UWC Forest Wide Motorized Program Project Details

All items shown below were accomplished with the exception of completing the Stansbury Front Trail reroute, Trail Creek and Skyline heavy maintenance, and signing work on Evanston and North Zone. This work will be completed during the 2022 season as part of the final grant closeout. The video compilation documenting the success of this project will also be completed during FY22.

### Heavy Trail Maintenance:

Trail	Number	Miles	Description
Tilda Springs	6102	4.5	Heavy tread work on 50% of trail including the installation and improvement of new and existing drainage. Work was needed to make trail safe for riding. In current state it is very difficult to ride and maintain. Effort was also made to assess, design and map a possible large scale and sustainable realignment of a segment of this trail that exceeds 40% grade.
Skyline South	6002	3	Initiated improvement to trail leaving Pineview Trailhead heading north. A section of trail discovered impassable to Forest compact heavy equipment due to a significant rock outcrop was prepared for completion next field season, with 6,000 linear feet of tread bench widened sufficiently to safely allow access for a breaker/hammer equipped excavator of sufficient size to perform this work.
Willow Creek South	025	100 Yards	Heavy tread work by hand to reestablish the trail.
Wolverine ATV	4301	300 Yards	Replaced existing boardwalk with new pressure treated lumber.
Trail Creek	4305	1.8	Heavy tread work needed on 60% of the trail along with installation of new drainage structures and reestablishing existing drainage structures. Establishing some pullouts in key areas to allow for passing of oncoming traffic as needed. This work is needed to ensure a safe and enjoyable recreation experience.
Stansbury Front	1750	5	Heavy maintenance, focused on improving drainage, installing reinforced grade dips where necessary.
Monks Hollow	8126	4.26	Heavy maintenance along the length of the trail, with a focus on improving drainage, installed reinforced grade dips where necessary.
Jones Ranch, Shram Creek, Bennie Creek, Shepherd, Sawmill-Nebo Creek, Page Fork	8101, 8124, 8071, 8099, 8130, 8088	2.75 2.5 4.37 4.8 5 3.5	The Pole Creek and Bald Mountain Fires of 2018 had serious impacts on these trails. Conditions are very dynamic and will continue to require heavy maintenance to remove hazard trees, keep tread and drainage established due to unstable soils, as well as brush back extensive new growth. This work will continue to be critical for keeping these trails open.



Summit Trail	8113	6.5	Work completed to continue detailing the new reroutes, and establishing flow as the trail settles.
Sawmill-Nebo Creek, Bennie Creek Trails	130 071	4	Both of these trails had segments that were severely damaged during high debris flows post Bald and Pole Creek Fires. Work was completed to identify new trail alignments and construct the new trails. Due to the complex nature of the terrain, Enterprise Trails was brought in to complete this work.

**Trail Reroutes:**

Trail	Number	Miles	Description
Little South Fork	067	.4	HKRD-The south section of trail was used as skid trail for a logging operation and was rerouted for better drainage and user experience to the new trailhead
Stansbury Front	1750	.5	Section of trail near Martin Fork. Bringing trail from 22.9% of eroding fall-line tread to 13.4% with cross slope. Created smooth climbing turns so riders will actually use the route, and rehabbed and obstructed the old trail.

**Education and Travel Management:**

HKRD conducted OHV Summer and Winter Travel Management with year-round patrols. Summer patrols focused on general responsible recreation and reducing off designated route travel multiple times a week. Route markers were installed as part of these education efforts where needed to keep the public on designated routes.

Winter patrols for the HKRD and the High Uinta Wilderness area boundary were patrolled once a week from December through March, weather permitting. Encroachment to the High Uinta Wilderness is becoming more popular. Patrols included education about riding in winter conditions, avalanche danger, Wilderness rules and regulations and assisting snowmobilers where needed. HKRD purchased and utilized materials from the Utah Avalanche Center.

**Signs and Kiosks:**

HKRD installed 6 new kiosks, 9 summer panels and 7 winter panels totaling 16 panels. Panels include information such as maps of trails/routes for summer and winter, legal places to ride, Wilderness boundaries, safety messages, multiple use etiquette, and historical interpretive information about the site. Forest Service employees will switch the panels between seasons. This is phase 3 of updating signs on HKRD.



**Location of HK Signage and Corresponding Trailhead (TH) and/or Forest Service Road:**

<b>Kiosks</b>	<b>Summer Panel</b>	<b>Winter Panel</b>
Clyde Creek TH-Westside Strawberry RD.	Clyde Creek TH	Clyde Creek TH
Strawberry River TH-Hwy 40	Strawberry River TH	Strawberry River TH
Coop Creek TH-Hwy 40	Coop Creek TH	Coop Creek TH
Lake Creek TH- rd. 083	Lake Creek TH- rd. 083	Lake Creek TH- rd. 083
New Little South Fork TH-rd. 096	Little South Fork TH South	
	Little South Fork TH-Hwy 35	
	Noblett's TH-Hwy 35	Noblett's TH-Hwy 35
Phelps Brook ATV TH-Hwy 35	Phelps Brook ATV TH	
	Spring Canyon North-rd. 041	
		Soapstone TH-Hwy 150 2 panels here.

**Trailhead and Trail Junction Signs on Spanish Fork RD**

The following trails received new trailhead and trail junction signs continuing with the phased trail signing project: Center Trail (Great Western) 009, Sixth Water Divide 014, Fifth Water 015, Fourth Water 017, Third Water Creek 236, Cottonwood Second Water 018, Jocks Canyon 019, Monks Hollow 126, Long Hollow 125, Monks Hollow Connector 318, Teat Mountain 202 and Knoll Hollow 076. This resulted in 55 new signs that are consistent in design, made of durable materials, and cost efficient to install and replace.

**Trailhead and Trail signs for the Ogden RD**

On the Ogden District, motorized signage focused on the Skyline area and the Willard Basin/Public Grove area. For the Skyline system, 11 Guide or reassurance signs will be installed along the trails 6001 and 6002. One new 2 panel kiosk will be installed at the North Ogden Divide TH, one new single panel kiosk will be installed at the Junction of Road 084 (Willard Basin) and the Willard Lake trail (connects to Skyline North), and two existing 2-3 panel kiosks will have new panels installed with maps and guidance for the area at Pineview TH and Dock Flat TH. On the Logan Ranger District, A new 2 panel Kiosk will be



installed at Richards Hollow TH, as well as guide signs for Richards Hollow (7019A&G), Cart Hollow (7123), and Seep Hollow (7026).

#### **Trailhead and Trail signs for the Evanston-Mountain View RD**

On the Evanston District, signage for the motorized trails will be focused on the Wolverine OHV Trail Complex. Directional Guide signs will be installed at junctions to assist motorists in determining where they need to go to arrive at their desired destinations along the Motorized Trail System. A new map panel will be installed where existing double panel kiosks are located at the trailhead. On the Mountain View District, signage will be focused on the Deadhorse ATV Trail Complex. Directional Guide signs will be installed at critical junctions to assist motorists while riding in this area to ensure a safe and enjoyable riding experience. The existing kiosks may need to be replaced or refurbished and new panels will be created with a map of the trail system.



## Uinta-Wasatch-Cache National Forest ATV/OHV Trails Included in Proposal

<b>Heber-Kamas Ranger District</b>	
Phelps Brook ATV Trail 301	3.6
Beaver ATV 3302	0.76
Bird's Eye ATV 3303	1.61
Boundary ATV 3304	1.61
Boundary ATV Loop 3304A	1.73
Box Canyon ATV 3305	1.47
Broadhead Loop ATV 3306	3.98
Broadhead Loop 2 3306A	1.72
Bushwack ATV 3307	0.8
Canyon Overlook ATV 3308	2.35
Commissary ATV 3310	0.66
Confluence ATV 3311	0.69
Dropout ATV 3312	0.72
Failure Canyon ATV 3313	0.4
Greenhorn ATV 3314	0.52
Hilltop ATV 3316	2
Holiday ATV 3317	1.475
Hoyt ATV 3318	0.51
Larkspur ATV 3319	0.67
Lost Creek ATV 3320	0.83
Lost Lake Loop ATV 3321	0.6
Maxwell ATV 3322	1.43
Meadow Park ATV 3323	0.58
Red Pine ATV 3325	1.2
GWT Strawberry Ridge	4.88
Slader Basin ATV 3328	4.15
Slader Ridge ATV 3329	2.2
switchback ATV 3331	0.44
Taylor Fork ATV 3332	3.9
White Pine ATV 3333	2.37
Cedar ATV 3401	4.72
Soapstone Basin ATV Trail 3320	1.58

<b>Mountain View-Evanston RD</b>	
Dead Horse System 701 A-H	17
Horse Creek 302	2.9
Wolverine ATV System 301 A-I	12.4
Trail Creek 305	1.8

<b>Logan and Ogden Ranger Districts</b>	
Little Bear 7010 & G	4
Turkey trail 7054G	1.5
Worm Fence ATV 7142G	3.7
Elk Valley Divide 7033 & A	8.3
Hodges Canyon 7028	2.4
Dugway Springs 7061	1.9
Tilda Springs 6102	4.3
Shoshone Trail 26 (Road 231)	4.4
Boundary Springs ATV 6330	1
Devils Hole 6030	1
Public Grove 6620	5.25
Dry Bread Hollow 6324	1.2
Dry Bread Loop 6611	1
Dry Bread Upper 6622	1.4
Mitchell Hollow 6619	1
Dry Mitchell Hollow ATV 6013	2.12

<b>Salt Lake Ranger District</b>	
Tuttle Loop ATV 1606	3.5
Gold Hill ATV 1611	1.97
West Canyon 1759	2.67

<b>Spanish Fork Ranger District</b>	
Monks Hollow 126	4.26
Long Hollow 125	6.99
Monks Hollow Connector 318	3.05
Teat Mountain 202	3.27
Knoll Hollow 076	2.97



### Uinta-Wasatch-Cache National Forest Single Track Included in Proposal

Pleasant Grove & Spanish Fork Ranger Districts	
Ant Knolls 031	1.1
Bear Canyon 179	2.11
Bear Canyon Spur 178	0.3
Mill Canyon 040	5.75
Tibble Fork 041	3.19
Timpooneke-Chris' Flat 151	5
Mud Springs 173	2.57
Ridge 157	17.12
South Fork Little Deer Creek 252	3.56
Salamander Flat 150	2
Pine Hollow 047	2
East Ridge 038	5.5
Shram Creek 124	2.5
Shepherd 099	4.8
Sawmill-Nebo Creek 130	5
Rock Springs 101	4
Page Fork 088	3.5
Lizard Lake 069	1
Jones Ranch 123	2.75
Frank Young 097	1.39
Bennie Creek 071	4.37
Summit 113	6.54
Center GWT 009	18.5
Sixth Water Divide 014	1.54
Fifth Water 015	8.51
Fourth Water 017	2.22
Third Water Creek 236	1.69
Cottonwood Second Water 018	7.62
Jocks Can 019	2.46
Mapleton-Sawmill Hollow 013	12.38
Packard Canyon 091	3.92
Kirkam Hollow 012	2.69
Left Fork Days Canyon 011	3.8

Heber-Kamas Ranger District	
French Hollow 027	5.70
Log Hollow Nobletts 064	5.3
Iron Mine Creek 065	2.71
Iron Mine Creek N. Spur 065A	0.68
Little South Fork Trail 067	8.61
Camp Hollow #068	3.92
Rock Springs Access 083	2.81
Buffalo Canyon 026	2.56
Willow Hollow 066	3.34
Willow Creek South 025	8.13
Willow Hollow Ridge 803	1.89

Salt Lake Ranger District	
North Canyon 1601	3
Mueller Park 1602	6.38
Stansbury Front Trail 1750	25

Logan and Ogden Ranger Districts	
Skyline North 6001(G)	9.9
Skyline South 6002	9.4
Lewis Peak 6041	3.2
Coldwater Peak 6087	0.5
Willard Lake 6090	0.8
Steel Hollow 7013	3.6
Right Hand Fork 7605	0.5
Richards Hollow 7019 (A & G)	7.3
Seep Hollow 7026	2.3
Cart Hollow 7123	1.9
Card Canyon West 7064	2.2



South Fork to Packard Canyon 058	14.19
Left Fork Maple Canyon 006	6

<b>Total Miles Single Track Trails</b>	<b>293</b>
--	------------