

The 22-mile Don Hatch Trail memorializes one of the regions true outdoor recreation pioneers. Roughly paralleling U.S. Highway 44 near the summit of the Uinta Mountains, this trail meanders through the lodge-pole pine forest and open parks common to the region. Numerous open areas are located adjacent to

Below are some specific items of interest about the trails included in the Uintah Basin Snowmobile Complex. Check with local U.S. Forest Service offices for trail guides and travel maps of ungroomed trails and areas open to snowmobile use.

Flaming Gorge National Recreation Area is located immediately adjacent to the complex, and offers world-class fishing and other recreational opportunities. Named for the brilliant flaming color of the sandstone ledges surrounding the reservoir, the Flaming Gorge area offers breathtaking views at every turn. Private lands are interspersed with public opportunities in the region, and snowmobilers are encouraged to respect private property rights.

Flaming Gorge, Red Canyon Lodge, and Taylor Mountain.

UINTAH BASIN SNOWMOBILE COMPLEX



The ever-present wind, which the Uinta Basin is famous for, results in moderate to severe drifting of the trail in less wooded areas around Trout Creek and Windy Park. The southern arm of the loop provides a well-sheltered trail that climbs leisurely along the dark canyon walls of Big Brush Creek. Wintering moose are

Because of the natural beauty of the area, Red Cloud Loop has been designated as a National Scenic Byway. When winter descends on the area, the beauty only increases. The trail is relatively flat, wide and well-groomed, providing excellent opportunities for riders of all abilities. More experienced riders will enjoy traveling the East Park Spur (C) and the Hacking Lake Trail (E) in search of expanding play areas in the high mountain parks and meadows. Snow conditions and forest logging operations generally result in delayed opening for this trail, with grooming beginning around the first of January.

Though the western section of the trail is generally wide and flat, snowmobilers should be aware of two particularly tricky sections of the southern part of the trail. South of Greendale Junction (to Flaming Gorge Lodge) the trail follows a power line right-of-way. The right-of-way crosses two large hills requiring advanced hill climbing skills to negotiate when fresh snow is on the trail. The trail is narrow along this stretch and only skilled riders should attempt to ride here unless the groomer has recently packed the trail.

the trail, providing ample opportunities for deep powder play. Easy access to the trail is gained at any number of plowed and signed trailheads.

Snowmobilers are urged to telephone the Avalanche Forecast Center for updated snow conditions and weather information before venturing into the backcountry.

Salt Lake City.....801-364-1581
Ogden.....801-626-8600
Provo.....801-378-4333
Logan.....435-797-4146

For local conditions and grooming information contact:
Utah Division of State Parks and Recreation
1-800-OHV-RIDE (1-800-648-7433)
801-538-7433 (Salt Lake City area)

Utah Department of Transportation
Road Conditions 1-800-492-2400

Ashley National Forest
Vernal Ranger District
435-789-1181

Roosevelt Ranger District
435-722-5081

Dinosaur Travel Region
1-800-477-5558

Information contained in this map was accurate at the time of printing and/or publication. Policies, facilities, fees, hours and regulations, etc. change as mandated. Grooming is dependent on snow conditions, schedules, equipment and resources availability. For updated information please contact the Utah Division of State Parks and Recreation.

The Utah Department of Natural Resources receives federal aid and prohibits discrimination on the basis of race, color, sex, age national origin or disability. For information or complaints regarding discrimination, contact Executive Director, Utah Department of Natural Resources, PO Box 145610, Salt lake City, UT 84114-5610 or Equal Employment Opportunity Commission, 1801 L Street, NW, Washington, DC 20507-0001.

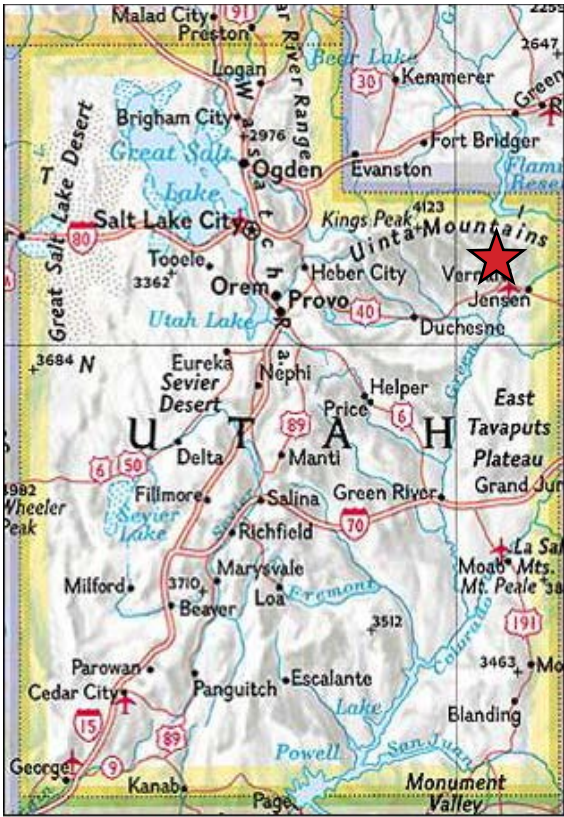
Printed on recycled paper.

22 Miles	B. Don Hatch	11 Miles	G Bassett Springs
2 Miles	C. East Park Spur	9.3 Miles	F. Taylor Mountain
31.6 Miles	D. Red Cloud Loop	9.5 Miles	E. Hacking Lake
9.3 Miles	F. Taylor Mountain	9.5 Miles	E. Hacking Lake
11 Miles	G Bassett Springs		

Connecting with the south end of the Don Hatch Trail is the Bassett Spring Trail. On the northern end, this 11-mile trail provides access to numerous play and climbing areas. As the trail begins to descend into Brush Creek, it becomes quite narrow and very steep requiring advanced riding skills to safely negotiate.

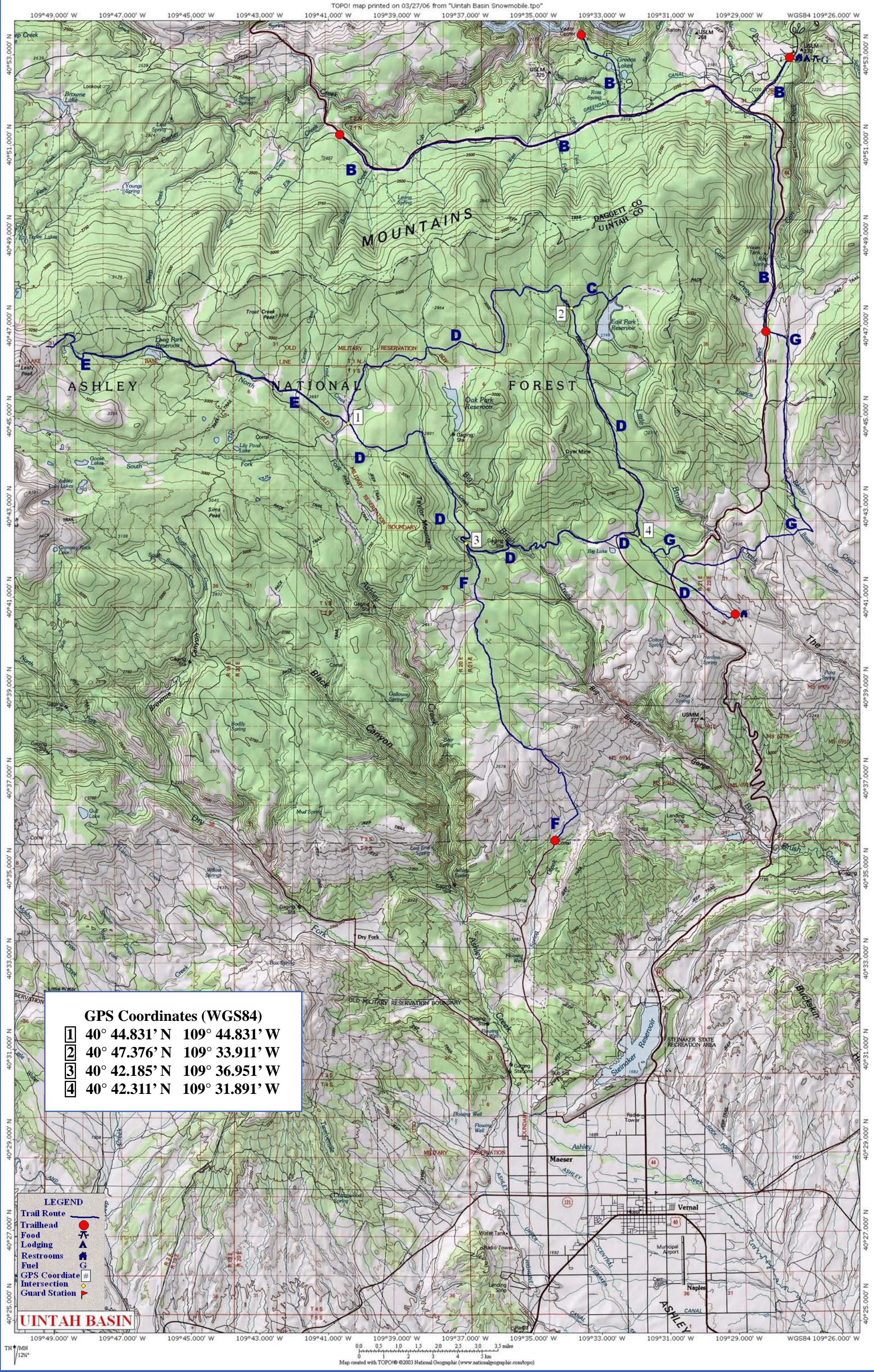
The Taylor Mountain Trail rises rapidly from the foothills north of Vernal to connect with the Red Cloud Loop Trail at Kaler Hollow. This trail is exposed throughout its length and may be devoid of snow during dry winters. Snowmobilers should inquire locally about snow conditions. When snow is plentiful, this trail provides a popular means of accessing the upper complex play areas. Wintering elk and deer often utilize much of the Taylor Mountain area as winter range, and riders are reminded not to chase or harass them.

occasionally seen along the eastern stretches of the trail. Riders should be prepared to yield to these massive creatures.



★ Uintah Basin Complex





GPS Coordinates (WGS84)

- 1** 40° 44.831' N 109° 44.831' W
- 2** 40° 47.376' N 109° 33.911' W
- 3** 40° 42.185' N 109° 36.951' W
- 4** 40° 42.311' N 109° 31.891' W

LEGEND

- Trail Route
- Trailhead
- Food
- Lodging
- Restrooms
- Fuel
- GPS Coordinate Intersection
- Guard Station