

## THREE CREEKS/JUNCTION SNOWMOBILE COMPLEX

Three Creeks/Junction Snowmobile Complex provides outstanding snowmobile opportunities from December through March. Elevations reach 11,500 feet above sea level, leading to a breathtaking scenic panorama. These trails provide access to winter scenery and enjoyable play areas. The vast expanse of the Sevier Plateau, and the beauty of the Tushar Mountains offer excellent snowmobiling and are sights not soon forgotten.

Access to the complex trail is provided by three major trailheads. Services along these trails are limited, and snowmobilers should take extra food and fuel.

Below are specific items of interest about trails of Three Creeks/Junction Snowmobile Complex. Check with local U.S. Forest Service offices for trail guides and travel maps of ungroomed trails and other areas open to snowmobile use.

**THREE CREEKS/JUNCTION TRAIL (D)**  
This trail provides easy access to Big Flat, one of the region's most well-known and beloved winter play areas. Accessed by the Puffer Lake Trailhead, this trail provides outstanding snowmobiling opportunities. Accessing this trail from Junction Trailhead offers a somewhat steeper climb to the top of Beaver Mountain. Several moderately steep switchbacks reward riders with beautiful views of the surrounding valleys and Pite Reservoir.

## KENT'S LAKE TRAIL (E)

Beautiful canyon riding and gradual climbing make Kent's Lake Trail a favorite of many riders. This well-groomed trail features twists and turns for riders experiencing the Tushar Mountains. Expansive play areas can be found near the junction of Kent's Lake and Three Creeks trails.

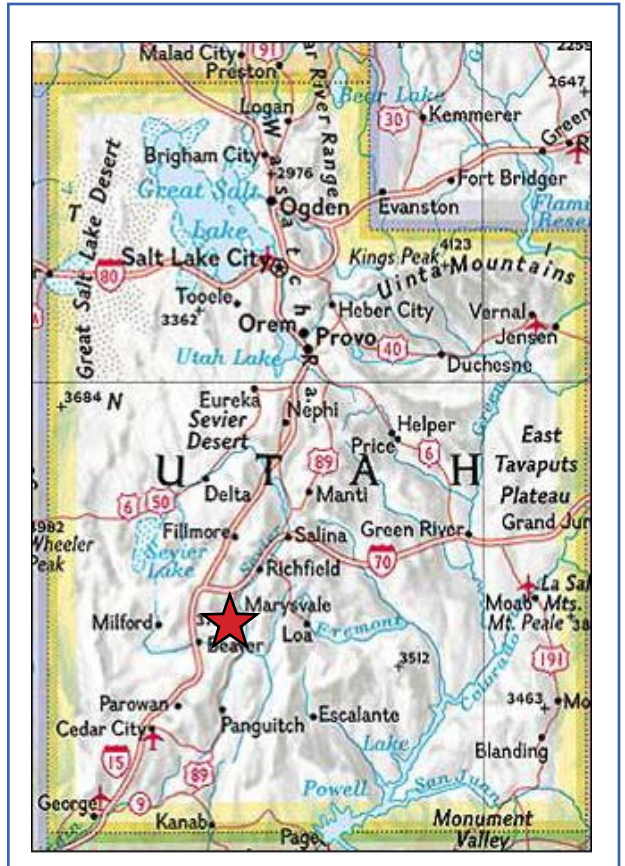
THREE CREEKS/JUNCTION COMPLEX	17 Miles	E. Kents Lake
	15.7 Miles	

### SAFETY TIPS

- Let someone know where you're going and when you expect to be back. Never ride alone.
- Be familiar with your machine. Know its fuel capacity and basic maintenance procedures.
- Carry extra spark plugs, extra drive belt, a tool kit, and a survival kit.
- Watch your fuel supply. Ride out only to a point where your fuel gauge reads one-half; then follow your tracks back to the trailhead.
- Ride on the right side of the trail, giving the uphill bound machine the right of way. Be careful not to follow other snowmobiles too closely.
- Dress for changing weather conditions. Layered clothing allows riders to adjust to changing temperatures and conditions.

- Check the weather and avalanche danger forecasts to avoid potentially dangerous situations.
- Never harass or chase wildlife.
- Use headlights and taillights in both daylight and darkness.
- Please park cars, trailers, campers etc., in designated snowmobile parking lots.
- Always be on the lookout for trail groomers on Utah's trails. Ride under control at all times.
- An adult should accompany and supervise operators ages eight through 15 at all times.
- Utah resident operators ages eight through 15 must possess an OHV education certificate for snowmobile use in order to legally operate a snowmobile on public property.
- Resident operators 16 years of age or older must possess a valid driver's license or an OHV education certificate.
- For more information on obtaining an OHV education certificate or complete information on OHV laws and rules, please contact the Division of Utah State Parks and Recreation at 1-800-OHV-RIDE.

PLEASE OBSERVE THE FOLLOWING RULES WHEN OPERATING SNOWMOBILES ON PUBLIC LANDS:



## ★ THREE CREEKS/JUNCTION COMPLEX



Snowmobilers are urged to telephone the Avalanche Forecast Center for updated snow conditions and weather information before venturing into the backcountry.

Salt Lake City.....	801-364-1581
Ogden.....	801-626-8600
Provo.....	801-378-4333
Logan.....	435-797-4146

For local conditions and grooming information contact:

Utah Division of State Parks and Recreation  
1-800-OHV-RIDE (1-800-648-7433)  
801-538-7433 ( Salt Lake City area )

Utah Department of Transportation  
Road Conditions 1-800-492-2400

Fishlake National Forest  
Richfield Ranger District  
435-896-9233

Loa Ranger District  
435-836-2811

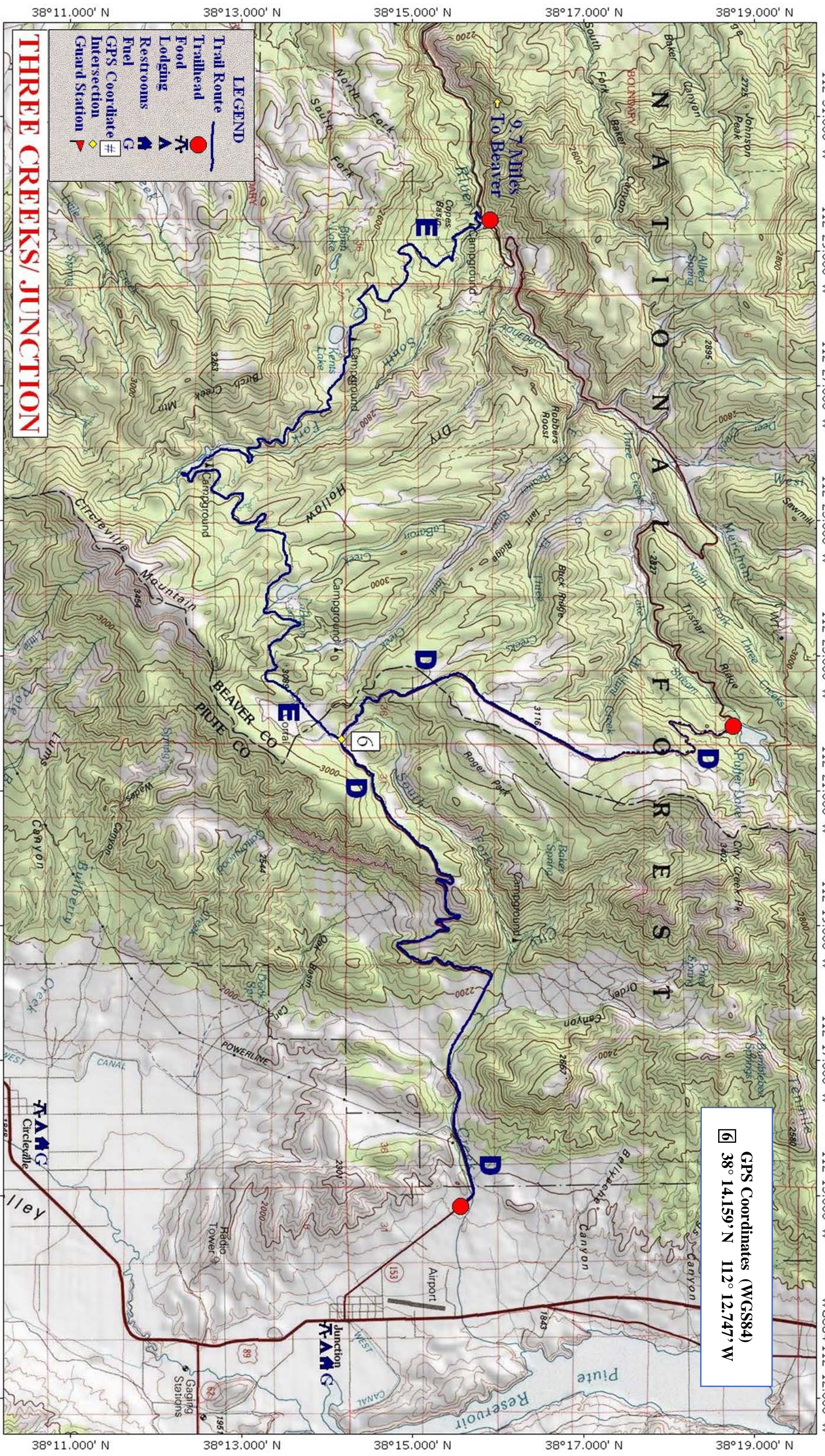
Beaver Ranger District  
435-438-2436

Panoramaland Travel Region  
435-623-5203

Information contained in this map was accurate at the time of printing and/or publication. Policies, facilities, fees, hours and regulations, etc. change as mandated. Grooming is dependent on snow conditions, schedules, equipment and resources availability. For updated information please contact the Utah Division of State Parks and Recreation.

The Utah Department of Natural Resources receives federal aid and prohibits discrimination on the basis of race, color, sex, age national origin or disability. For information or complaints regarding discrimination, contact Executive Director, Utah Department of Natural Resources, PO Box 145610, Salt lake City, UT 84114-5610 or Equal Employment Opportunity Commission, 1801 L Street, NW, Washington, DC 20507-0001.





**LEGEND**

- Trail Route
- Trailhead
- Food
- Lodging
- Restrooms
- Fuel
- GPS Coordinate
- Intersection
- Guard Station

# THREE CREEKS/JUNCTION

GPS Coordinates (WGS84)  
 6 38° 14.159' N 112° 12.747' W

38°11.000' N 38°13.000' N 38°15.000' N 38°17.000' N 38°19.000' N

112°31.000' W 112°29.000' W 112°27.000' W 112°25.000' W 112°23.000' W 112°21.000' W 112°19.000' W 112°17.000' W 112°15.000' W 112°12.000' W

WGS84 112°12.000' W

TN 13°

0.0 0.5 1.0 1.5 2.0 2.5 3.0 3.5 miles

0 1 2 3 4 5 km

Map created with TOPOI® ©2003 National Geographic (www.nationalgeographic.com/topo)