

The Whitney Trail is an easy-to-ride spur trail with numerous open play areas. The marked trail ends approximately 7.4 miles from the junction with the Mirror Lake Trail, and only those with extensive knowledge of the area should proceed further. There are extensive private property holdings in this area

**MIRROR LAKE HIGHWAY (A)**  
This easy, wide 35-mile trail climbs steadily to the 10,600 foot Bald Mountain overlook. Open play areas are limited, and off-trail riding should be limited to advanced snowmobile riders. Most of the available play areas are on frozen lakes and riders should exercise extreme caution. The trail is well groomed, but use and weather conditions may make the trail bumpy near the trailhead, smoothing as the trail climbs. This is a popular trail for skiers and mushers as well, and snowmobilers are encouraged to be courteous to all users.

Perhaps the most attractive feature of this complex is the majestic mountain scenery. Adjacent peaks rise to 13,000 feet above sea level, while hundreds of lakes lie frozen beneath the snow from November through May. The Mirror Lake and Mill Hollow snowmobile complexes provide some of the finest snowmobiling opportunities in the state with over 150 miles of groomed trails traversing the high Uinta Mountains. Located within a one-hour drive of Salt Lake City and the Wasatch Front, this complex can be accessed via four major trailheads.

## MIRROR LAKE SNOWMOBILE COMPLEX

**WHITNEY (B)**  
The North Slope Trail heads east from the Bear River Trailhead. This 45-mile trail is groomed by the U.S. Forest Service and connects with the Deadhorse Trail near Mountain View, Wyoming.

**NOBLETT'S (E)**  
This three-mile spur provides access to the Mirror Lake and Mill Hollow complexes from the Nobletts Trailhead. A large trailhead with restrooms makes this an attractive launching site for many riders. There are few play areas located along this trail, but wintering wildlife, including moose may be seen near the trailhead.

**WOLF CREEK (D)**  
This well-groomed 10.2-mile trail spur provides access to the Mirror Lake and Mill Hollow snowmobile complexes from the Hanna Trailhead. A popular hill climbing area is located near Wolf Creek Pass. This trail is generally well shaded and holds snow well.

**SOAPSTONE (C)**  
The Soapstone Trail begins near the Soapstone Gate (Milepost 14.5 on Highway 150) and climbs gradually to wide open play areas. Several switchbacks along the trail reward the rider with views and vistas of the upper Provo River Valley. Riders unfamiliar with the area should stay on the groomed trail or ride with an experienced trail guide. The southern portions of the Soapstone Trail connect with the Strawberry Snowmobile Complex.

and snowmobilers should watch for signs. A warming hut is located at the Whitney Guard Station at the end of the trail.

Check the weather and avalanche danger forecasts to avoid potentially dangerous situations.

• Dress for changing weather conditions. Layered clothing allows riders to adjust to changing temperatures and conditions.

• Watch your fuel supply. Ride out only to a point where your fuel gauge reads one-half; then follow your tracks back to the trailhead.

• Let someone know where you're going and when you expect to be back. Never ride alone.

### SAFETY TIPS

MIRROR LAKE COMPLEX	
A. Mirror Lake	34.3 Miles
B. Whitney	7.4 Miles
C. Soapstone	22 Miles
D. Wolf Creek	10.2 Miles
E. Nobletts	2.9 Miles
H. North Slope	45 Miles

Snowmobilers are urged to telephone the Avalanche Forecast Center for updated snow conditions and weather information before venturing into the backcountry.

Salt Lake City.....	801-364-1581
Ogden.....	801-626-8600
Provo.....	801-378-4333
Logan.....	435-797-4146

For local conditions and grooming information contact:

Utah Division of State Parks and Recreation  
1-800-OHV-RIDE (1-800-648-7433)  
801-538-7433 ( Salt Lake City area )

Utah Department of Transportation  
Road Conditions 1-800-492-2400

Wasatch-Cache National Forest  
Kamas Ranger District  
435-783-4338

Evanston Ranger District  
307-789-3194

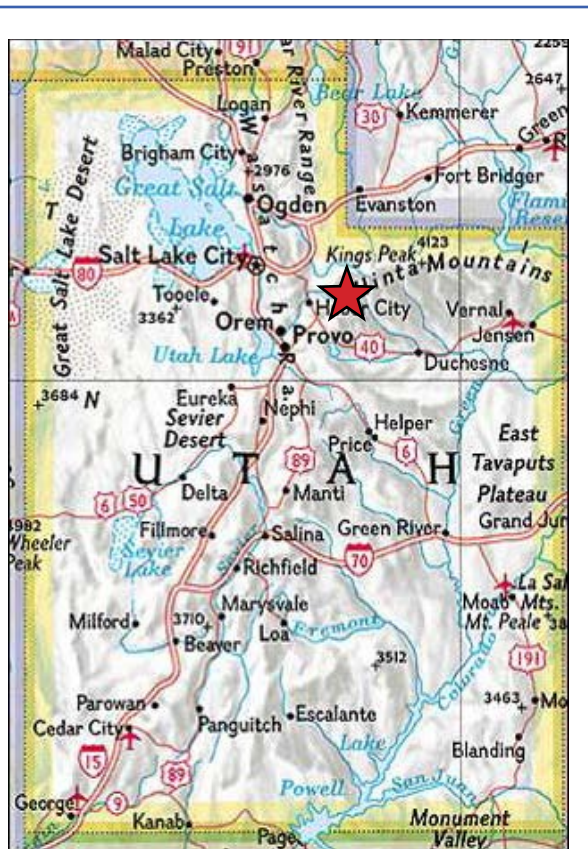
Uinta National Forest  
Heber Ranger District  
435-654-0470

Mountain Travel Region  
801-229-3800

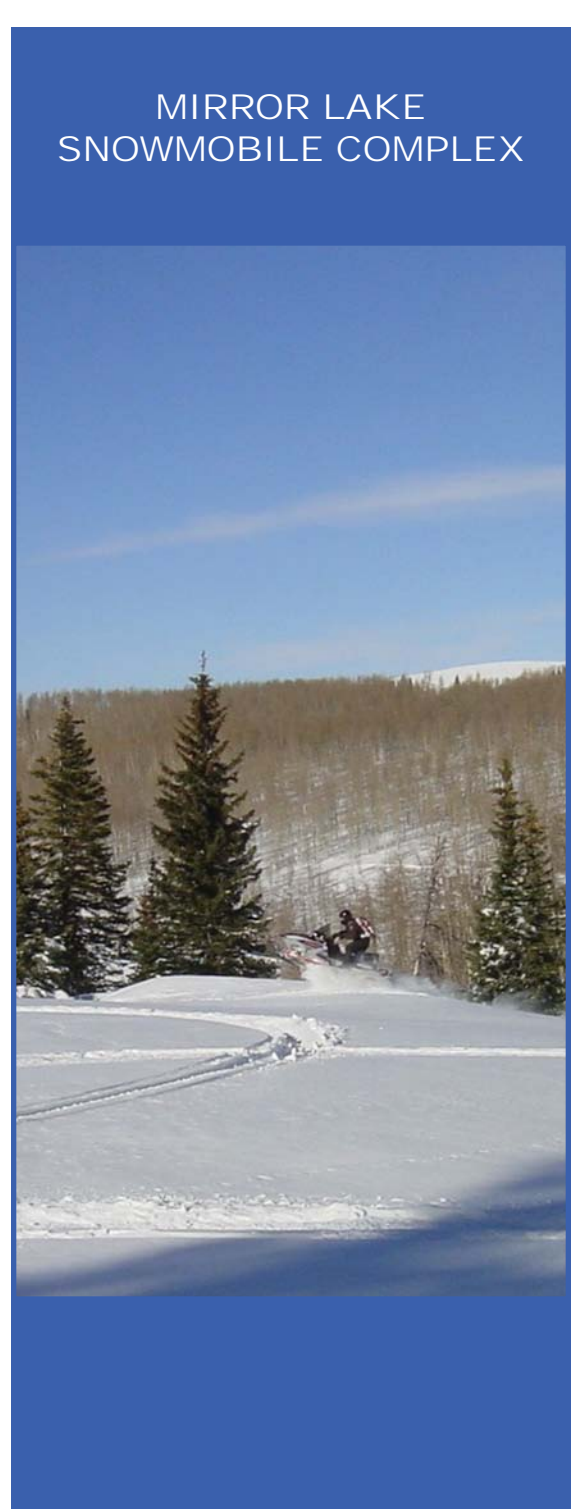
Information contained in this map was accurate at the time of printing and/or publication. Policies, facilities, fees, hours and regulations, etc. change as mandated. Grooming is dependent on snow conditions, schedules, equipment and resources availability. For updated information please contact the Utah Division of State Parks and Recreation.

The Utah Department of Natural Resources receives federal aid and prohibits discrimination on the basis of race, color, sex, age national origin or disability. For information or complaints regarding discrimination, contact Executive Director, Utah Department of Natural Resources, PO Box 145610, Salt lake City, UT 84114-5610 or Equal Employment Opportunity Commission, 1801 L Street, NW, Washington, DC 20507-0001.

Printed on recycled paper.



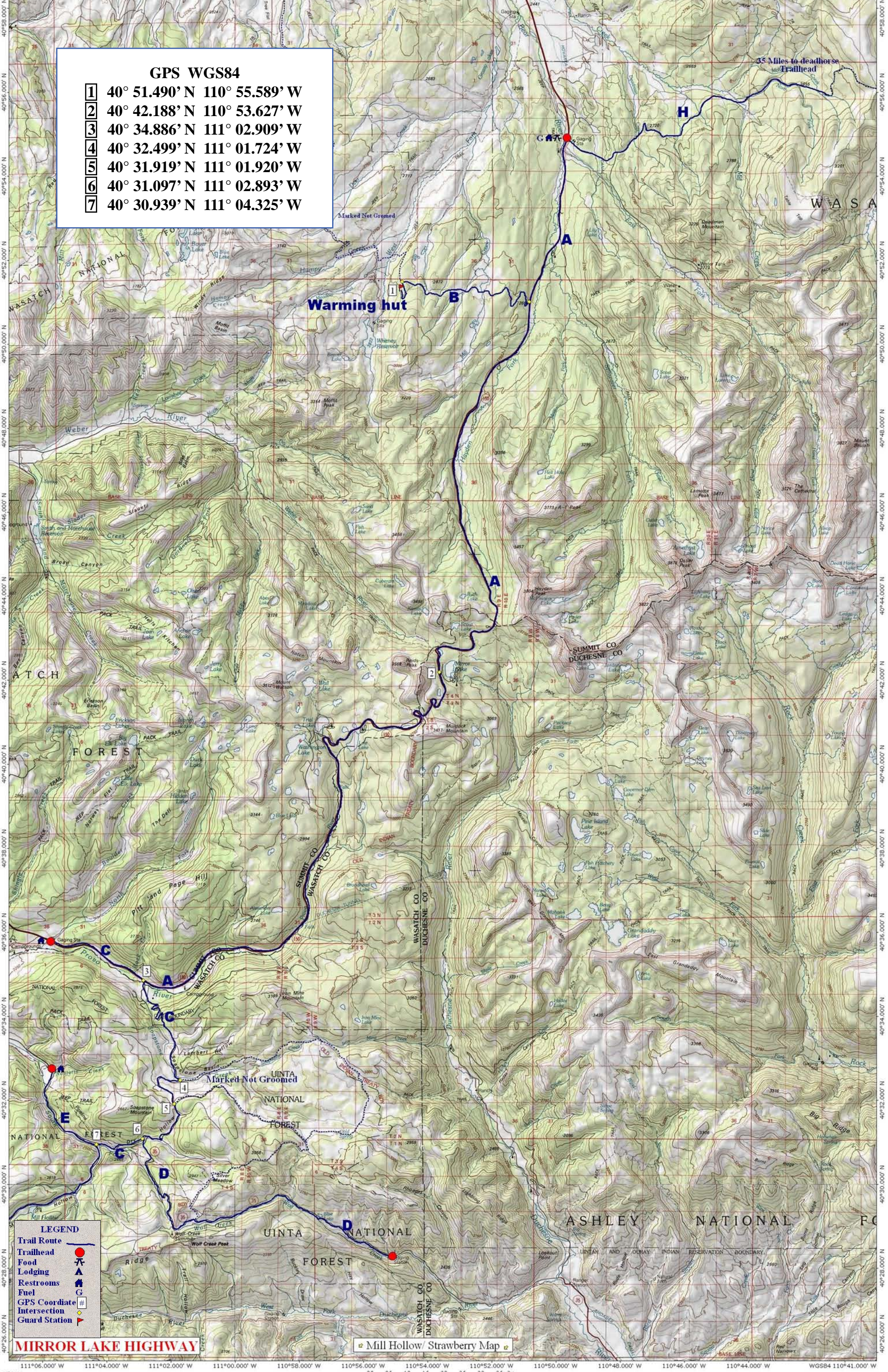
## MIRROR LAKE COMPLEX





GPS WGS84

- 1 40° 51.490' N 110° 55.589' W
- 2 40° 42.188' N 110° 53.627' W
- 3 40° 34.886' N 111° 02.909' W
- 4 40° 32.499' N 111° 01.724' W
- 5 40° 31.919' N 111° 01.920' W
- 6 40° 31.097' N 111° 02.893' W
- 7 40° 30.939' N 111° 04.325' W



**LEGEND**

- Trail Route
- Trailhead
- Food
- Lodging
- Restrooms
- Fuel
- GPS Coordinate
- Intersection
- Guard Station

MIRROR LAKE HIGHWAY

Mill Hollow/ Strawberry Map