

MILL HOLLOW SNOWMOBILE COMPLEX

Mirror Lake, Mill Hollow and Strawberry snowmobile complex areas provide some of the finest snowmobiling opportunities in the state with over 250 miles of groomed trails traversing the high Uinta Mountains. Located within a one-hour drive of Salt Lake City and the Wasatch Front, these complexes can be accessed via eight major trailheads.

This combination of complexes is rapidly becoming one of the largest and most popular snowmobile areas in the state due to proximity to the Wasatch Front, diversity of groomed trails and open play areas, scenery and riding opportunities.

Perhaps the most attractive feature of these complexes is the majestic mountain scenery. Adjacent peaks rise to 13,000 feet surrounded by thousands of acres of vast open space, typically snow covered November through May.

— DANIELS LOOP TRAIL (A)
This is one of the best maintained trails in the Strawberry Complex and offers excellent riding opportunities for families and beginning riders. Expansive play areas are located immediately adjacent to the trail at lower elevations. Most of the trail winds leisurely through the tall evergreens and aspens of the area, though caution is advised near the summit, as high winds can cause drifting and can create hazardous conditions.

— SOAPSTONE (C)
The Soapstone Trail begins near the Soapstone Gate (Milepost 14.5 on Highway 150) and climbs gradually to wide, open play areas. Several

switchbacks along the trail reward riders with ever-changing views and vistas of the upper Provo River Valley. Riders unfamiliar with the area should stay on the groomed trail or ride with an experienced trail guide. The southern portions of the Soapstone Trail connect with the Strawberry Snowmobile Complex.

— WOLF CREEK (D)
This well-groomed 10.5-mile trail spur provides access to the Mirror Lake and Mill Hollow snowmobile complexes from the Hanna Trailhead. A popular hill climbing area is located near Wolf Creek Pass. This trail is generally well-shaded and holds snow well.

— NOBLETT'S (E)
This three-mile spur provides access to the Mirror Lake and Mill Hollow complexes from the Nobletts Trailhead. A large trailhead with restroom makes this an attractive launching site for many riders. There are few play areas located along this trail, but wintering wildlife, including moose may be seen near the trailhead.

— CO-OP CREEK TRAIL (F)
The Co-op Creek Trail offers tremendous views of the Strawberry Valley as it climbs through the switchbacks and turns on the mountainside. Extensive play and hill climbing areas are available near the trailhead and along the length of the trail.

— STRAWBERRY RIVER TRAIL (G)
The Strawberry River Trail features expansive play areas near the trailhead. The trail narrows as it winds its way to the top of the mountain where additional play and hill climbing areas are found. This area is prone to falling timber during storms, and snowmobilers are cautioned to be on the constant lookout for trees on the

trail. Also the narrow nature of the trail requires extra caution, as riders must be on the lookout for oncoming traffic. Strong winds near the summit to the north can cause cornices to form on the hillsides. Hill climbers are cautioned to avoid corniced ridges.

— STRAWBERRY TRAIL (H)
This wide, well-groomed trail follows the western shores of Strawberry Reservoir to Renegade Point before climbing into the tree-covered slopes to the south of the reservoir. This is an excellent ride for all riders and features extensive play areas along its length. Several side loop trails intersect with the Strawberry Trail and provide excellent opportunities for riders to explore new country. Drifting is a distinct possibility along the open stretches of the trail, and because of the popularity of this trail, it can become bumpy.

MILL HOLLOW/STRAWBERRY	Miles
A. Daniels Loop	25.6 Miles
C. Soapstone	19.5 Miles
D. Wolf Creek	10.5 Miles
E. Nobletts	2.9 Miles
F. Co-op Creek	18.3 Miles
G. Strawberry River	11.5 Miles
H. Strawberry	37.5 Miles
K. Lou's Cut-Off	3 Miles
M. Mud Creek	8 Miles
N. Marina	2.5 Miles
O. Lake Creek	5 Miles

MILL HOLLOW SNOWMOBILE COMPLEX



Snowmobilers are urged to telephone the Avalanche Forecast Center for updated snow conditions and weather information before venturing into the backcountry.

Salt Lake City.....	801-364-1581
Ogden.....	801-626-8600
Provo.....	801-378-4333
Logan.....	435-797-4146

For local conditions and grooming information contact:

Utah Division of State Parks and Recreation
1-800-OHV-RIDE (1-800-648-7433)
801-538-7433 (Salt Lake City area)

Utah Department of Transportation
Road Conditions 1-800-492-2400

Wasatch-Cache National Forest
Kamas Ranger District
435-783-4338

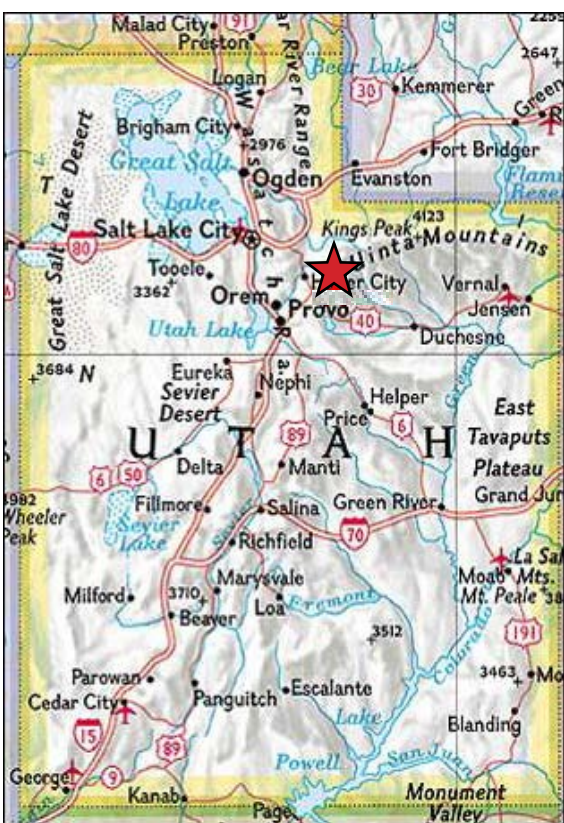
Uinta National Forest
Heber Ranger District
435-654-0470

Mountain Travel Region
801-229-3800

Information contained in this map was accurate at the time of printing and/or publication. Policies, facilities, fees, hours and regulations, etc. change as mandated. Grooming is dependent on snow conditions, schedules, equipment and resources availability. For updated information please contact the Utah Division of State Parks and Recreation.

The Utah Department of Natural Resources receives federal aid and prohibits discrimination on the basis of race, color, sex, age national origin or disability. For information or complaints regarding discrimination, contact Executive Director, Utah Department of Natural Resources, PO Box 145610, Salt lake City, UT 84114-5610 or Equal Employment Opportunity Commission, 1801 L Street, NW, Washington, DC 20507-0001.

Printed on recycled paper.



MILL HOLLOW COMPLEX

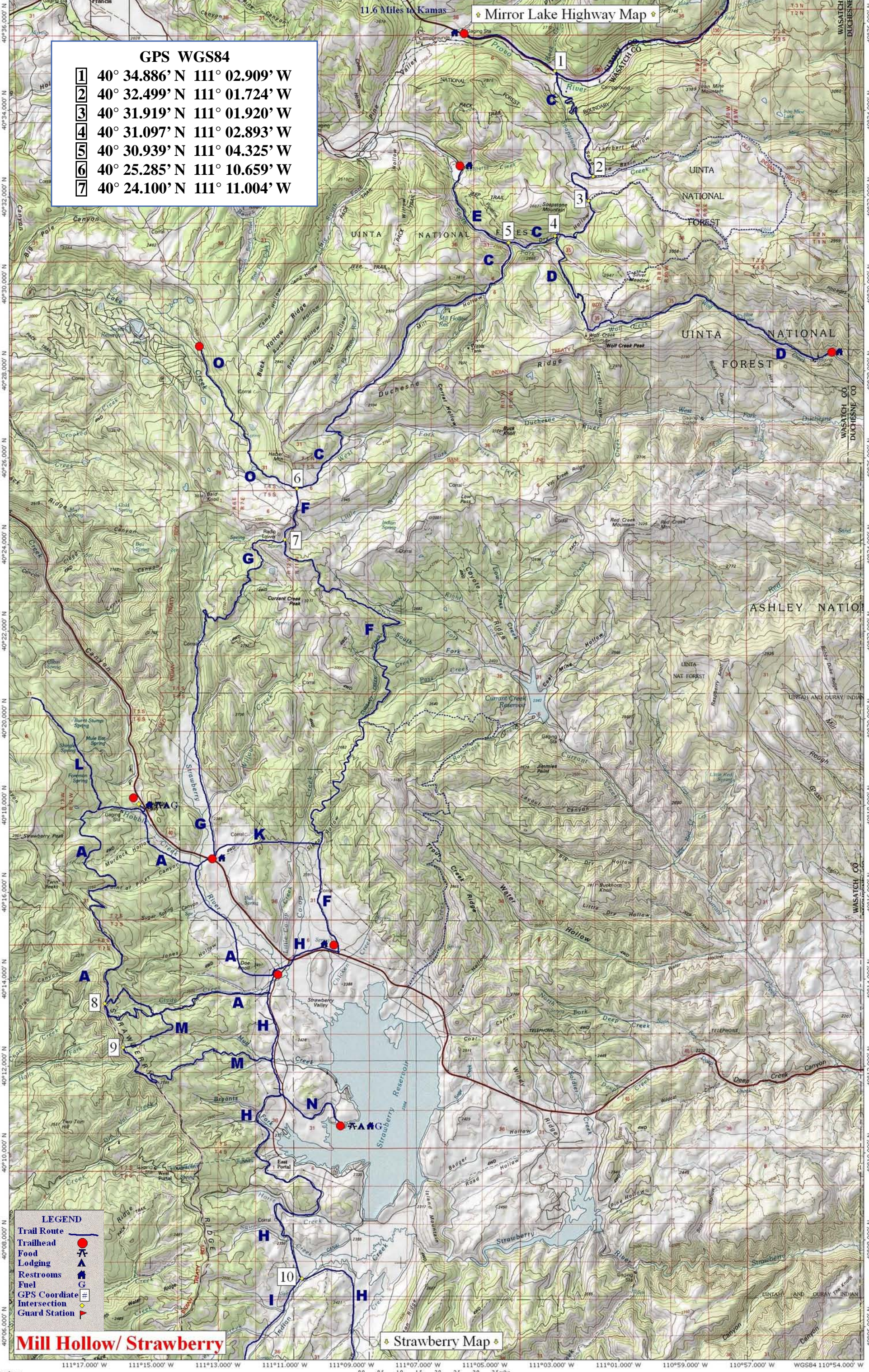


11.6 Miles to Kamas

Mirror Lake Highway Map

GPS WGS84

- 1 40° 34.886' N 111° 02.909' W
- 2 40° 32.499' N 111° 01.724' W
- 3 40° 31.919' N 111° 01.920' W
- 4 40° 31.097' N 111° 02.893' W
- 5 40° 30.939' N 111° 04.325' W
- 6 40° 25.285' N 111° 10.659' W
- 7 40° 24.100' N 111° 11.004' W



Mill Hollow/ Strawberry

Strawberry Map