

Considered by some to be the best trail available in this part of the state, the Ephraim Canyon Trail provides easy access to Skyline Drive via Ephraim Canyon. This wide trail features relatively shallow grades with few surprises. Twists and turns along the length of the canyon add to the variety and provide opportunities for snowmobilers to experience some great views of the Sanpete Valley. Grooming ends at the Philadelphia Flat Road

Below are some specific items of interest about the trails included in the Skyline South Snowmobile Complex. Check with local U.S. Forest Service offices for guides and travel maps of ungroomed trails and other areas open to snowmobile use.

This central Utah complex is located away from the major population centers of the Wasatch Front and offers generally uncrowded riding conditions. The varied terrain makes this a perfect destination. Whether you want to follow a groomed trail or glide through open fields of fresh powder, opportunities here are endless.

The plateau above Ephraim, Manti and Mayfield (Twelvemile) canyons provides excellent snowmobiling from November to April and connects with Joe's Valley and Ferron areas. This complex is in close proximity to the popular Skyline Drive snowmobile trail (located to the north) and provides access to open riding opportunities rising above 10,000 feet.

**EPHRAIM/MANTI/MAYFIELD SNOWMOBILE COMPLEX**

Please help to ensure a safe, enjoyable snowmobile experience for everyone by observing these simple rules.

- Let someone know where you're going and when you expect to be back. Never ride alone.
- Be familiar with your machine. Know its fuel capacity and basic maintenance procedures.
- Carry extra spark plugs, extra drive belt, a tool kit, and a survival kit.
- Watch your fuel supply. Ride out only to a point where your fuel gauge reads one-half; then follow your tracks back to the trailhead.
- Ride on the right side of the trail, giving the uphill bound machine the right of way. Be careful not to follow other snowmobiles too closely.
- Dress for changing weather conditions. Layered clothing allows riders to adjust to changing temperatures and conditions.
- Check the weather and avalanche danger forecasts to avoid potentially dangerous situations.

**SAFETY TIPS**

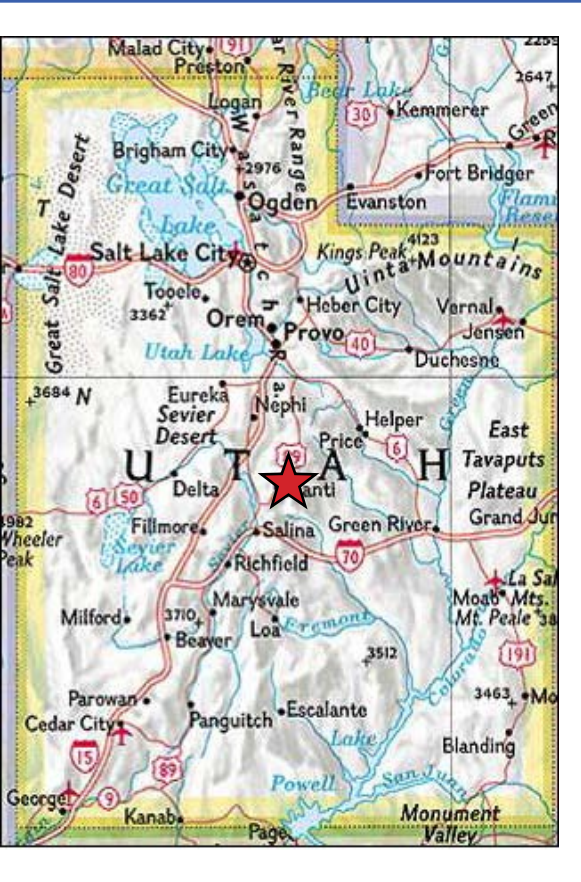
EPHRAIM/MANTI/MAYFIELD COMPLEX	9.5 Miles	C. Ephraim Canyon
	5.9 Miles	D. Manti Canyon
	11.5 Miles	E. Twelvemile Canyon

Riders should be aware of the likelihood of drifting in the Newfield Reservoir and Spring Hill areas, and should enter the Wasatch Plateau play areas with due caution. The eastern slopes of the Wasatch Plateau are steep and may be unstable. Additionally, flat light may reduce visibility of the many ledges and cliffs in the area. Always ride under control.

The Twelvemile Trail follows the bottom of Twelvemile Canyon and as such may be devoid of snow during dry years. Additionally, during low snow years, logging operations continue well into the winter months and snow is removed from the Twelvemile Canyon Road. When sufficient snow falls to allow for grooming, this trail provides plenty of opportunities for all snowmobilers.

Like the Ephraim Canyon Trail, the Manti Canyon Trail allows riders relatively easy access to Skyline Drive and play areas of the Wasatch Plateau. Though not as wide as the Ephraim Canyon Trail, this route is a somewhat quicker means of accessing the top of the mountain. Grooming ends at Elderberry Flat, and riders desiring to go beyond this point should be aware of significant danger from avalanches in this area. Never proceed beyond the groomed trail alone or without proper avalanche safety equipment.

Junction just below Skyline Drive. Riders should watch for deer at lower elevations and should maintain a respectful distance.



**EPHRAIM/MANTI/MAYFIELD SNOWMOBILE COMPLEX**

Snowmobilers are urged to telephone the Avalanche Forecast Center for updated snow conditions and weather information before venturing into the backcountry.

Salt Lake City.....	801-364-1581
Ogden.....	801-626-8600
Provo.....	801-378-4333
Logan.....	435-797-4146

For local conditions and grooming information contact:

Utah Division of State Parks and Recreation  
1-800-OHV-RIDE (1-800-648-7433)  
801-538-7433 ( Salt Lake City area )

Utah Department of Transportation  
Road Conditions 1-800-492-2400

Manti-LaSal National Forest  
Price Ranger District  
435-637-2817

Ferron Ranger District  
435-384-2372

Sanpete Ranger District  
435-283-4151

Castle Country Travel Region  
1-435-637-3009

Information contained in this map was accurate at the time of printing and/or publication. Policies, facilities, fees, hours and regulations, etc. change as mandated. Grooming is dependent on snow conditions, schedules, equipment and resources availability. For updated information please contact the Utah Division of State Parks and Recreation.

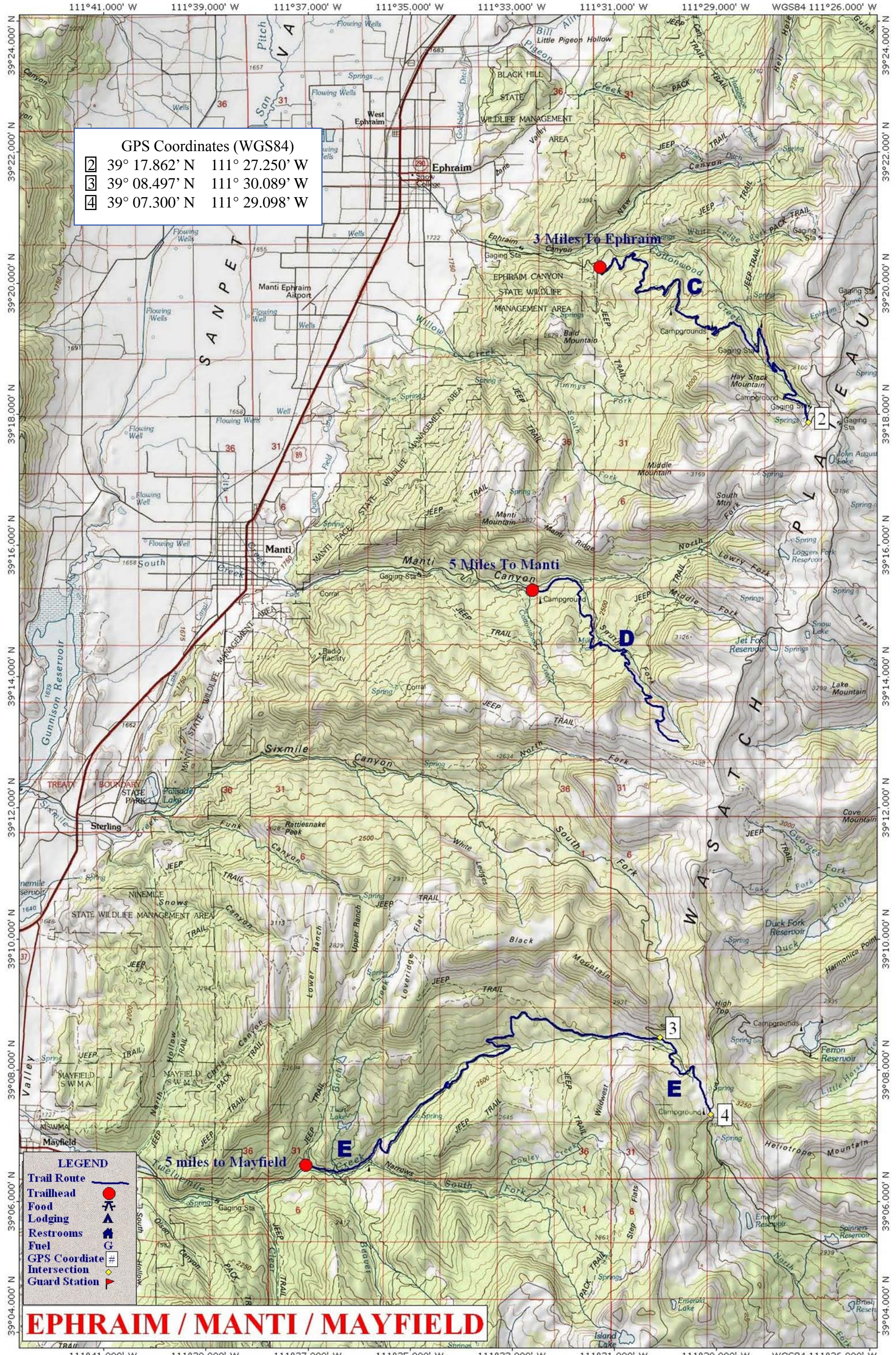
The Utah Department of Natural Resources receives federal aid and prohibits discrimination on the basis of race, color, sex, age national origin or disability. For information or complaints regarding discrimination, contact Executive Director, Utah Department of Natural Resources, PO Box 145610, Salt lake City, UT 84114-5610 or Equal Employment Opportunity Commission, 1801 L Street, NW, Washington, DC 20507-0001.

Printed on recycled paper.

**EPHRAIM/MANTI/MAYFIELD SNOWMOBILE COMPLEX**



GPS Coordinates (WGS84)  
 2 39° 17.862' N 111° 27.250' W  
 3 39° 08.497' N 111° 30.089' W  
 4 39° 07.300' N 111° 29.098' W



**LEGEND**

- Trail Route
- Trailhead
- Food
- Lodging
- Restrooms
- Fuel
- GPS Coordinate
- Intersection
- Guard Station

**EPHRAIM / MANTI / MAYFIELD**