

The East Fork Trail originates from Ruby's Inn near Bryce Canyon National Park. The 18-mile groomed trail is a winter wonderland contrasted by red cliffs and giant ponderosa pines. From lofty mountain overviews, you can see snow covered, delicately carved spires

Below are some specific items of interest about the trails included in the East Fork Snowmobile Complex. Check with local U.S. Forest Service offices for trail guides and travel maps of ungroomed trails and other areas open to snowmobile use.

This complex includes trails leading to the spectacular scenery of Bryce Canyon National Park, where millions of years of erosion and uplift have created magnificent redrock formations. Access to the complex is via a major trailhead at Ruby's Inn.

The East Fork Snowmobile Complex provides snowmobilers with extensive trails in southern Utah's famous color country. Located within a four-hour drive of the major population centers of Las Vegas and the Wasatch Front, and located just west of Bryce Canyon National Park, this complex is an ideal snowmobile destination.

Ample snow on the high mountain trails and winter access to some of America's most unique scenery, make this one of Utah's premier snowmobile complexes. An abundance of quality facilities and accommodations are also available in this area.

EAST FORK SNOWMOBILE COMPLEX



EAST FORK SNOWMOBILE COMPLEX

of Bryce Canyon. Snowmobiling within the national park is not allowed.

These trails allow riders access to miles of open play areas and ungroomed trails of the Paunsaugunt, known for large elk, deer and one place where you can see a large variety of evergreen trees.

EAST FORK COMPLEX	K. East Fork	8.2 Miles
	L. Johnson Mill	10.5 Miles
	N. Tropic Reservoir	4.8 Miles

SAFETY TIPS

- Let someone know where you're going and when you expect to be back. Never ride alone.
- Be familiar with your machine. Know its fuel capacity and basic maintenance procedures.
- Carry extra spark plugs, extra drive belt, a tool kit, and a survival kit.
- Watch your fuel supply. Ride out only to a point where your fuel gauge reads one-half; then follow your tracks back to the trailhead.
- Ride on the right side of the trail, giving the uphill bound machine the right of way. Be careful not to follow other snowmobiles too closely.
- Dress for changing weather conditions. Layered clothing allows riders to adjust to changing temperatures and conditions.

- Utah resident operators ages eight through 15 must possess an OHV education certificate for snowmobile use in order to legally operate a snowmobile on public property.
- Resident operators 16 years of age or older must possess a valid driver's license or an OHV education certificate.
- For more information on obtaining an OHV education certificate or complete information on OHV laws and rules, please contact the Division of Utah State Parks and Recreation at 1-800-OHV-RIDE.

PLEASE OBSERVE THE FOLLOWING RULES WHEN OPERATING SNOWMOBILES ON PUBLIC LANDS:

- Check the weather and avalanche danger forecasts to avoid potentially dangerous situations.
- Never harass or chase wildlife.
- Use headlights and taillights in both daylight and darkness.
- Please park cars, trailers, campers etc., in designated snowmobile parking lots.
- Always be on the lookout for trail groomers on Utah's trails. Ride under control at all times.
- An adult should accompany and supervise operators ages eight through 15 at all times.

Snowmobilers are urged to telephone the Avalanche Forecast Center for updated snow conditions and weather information before venturing into the backcountry.

Salt Lake City.....	801-364-1581
Ogden.....	801-626-8600
Provo.....	801-378-4333
Logan.....	435-797-4146

For local conditions and grooming information contact:

Utah Division of State Parks and Recreation
1-800-OHV-RIDE (1-800-648-7433)
801-538-7433 (Salt Lake City area)

Utah Department of Transportation
Road Conditions 1-800-492-2400

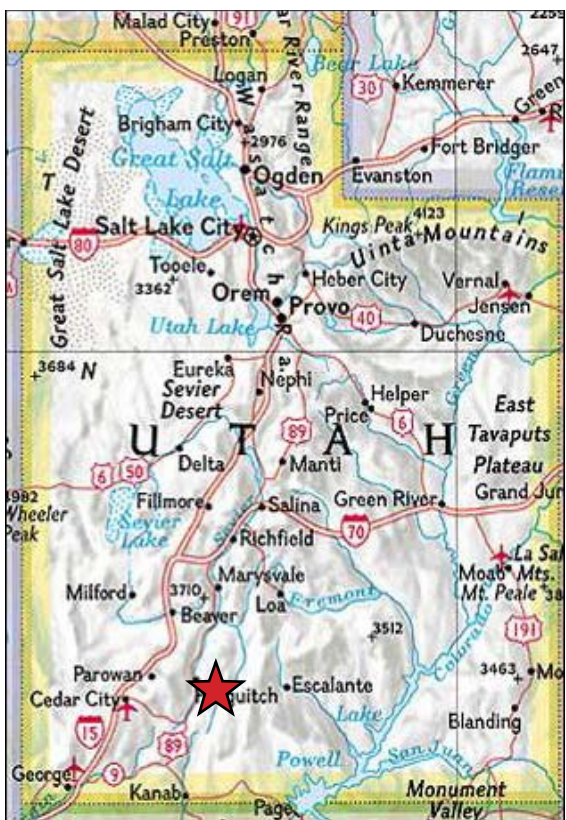
Dixie National Forest
Cedar City Ranger District
435-865-3700

Color Country Travel Region
1-800-233-8824

Information contained in this map was accurate at the time of printing and/or publication. Policies, facilities, fees, hours and regulations, etc. change as mandated. Grooming is dependent on snow conditions, schedules, equipment and resources availability. For updated information please contact the Utah Division of State Parks and Recreation.

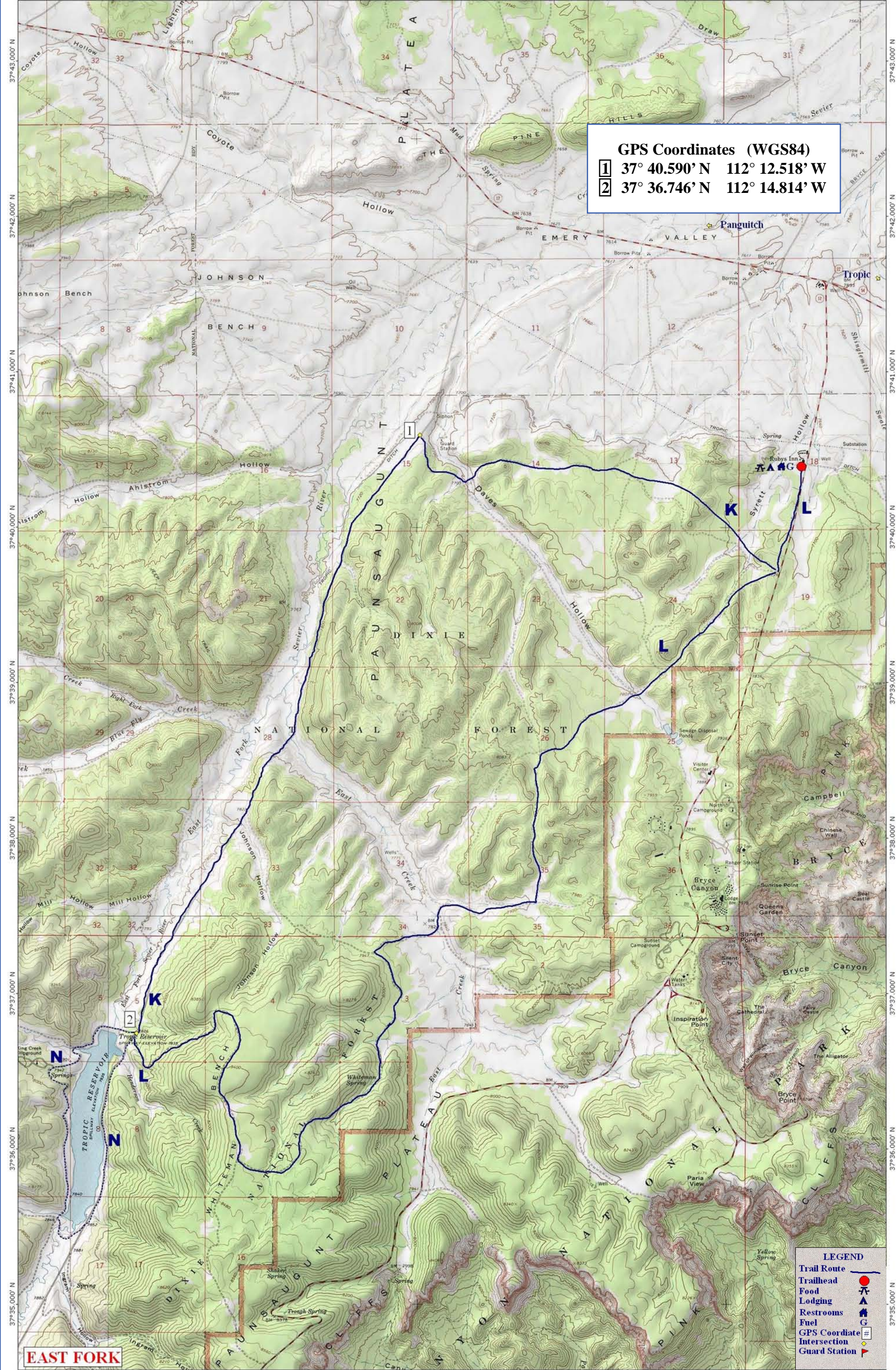
The Utah Department of Natural Resources receives federal aid and prohibits discrimination on the basis of race, color, sex, age national origin or disability. For information or complaints regarding discrimination, contact Executive Director, Utah Department of Natural Resources, PO Box 145610, Salt lake City, UT 84114-5610 or Equal Employment Opportunity Commission, 1801 L Street, NW, Washington, DC 20507-0001.

Printed on recycled paper.



EAST FORK COMPLEX





GPS Coordinates (WGS84)
1 37° 40.590' N 112° 12.518' W
2 37° 36.746' N 112° 14.814' W

LEGEND

- Trail Route
- Trailhead
- Food
- Lodging
- Restrooms
- Fuel
- GPS Coordinate
- Intersection
- Guard Station

EAST FORK