

# Gunlock State Park



Resource Management Plan

October 2006



STATE OF UTAH  
NATURAL RESOURCES  
Division of Parks & Recreation



# Utah State Parks and Recreation Gunlock Resource Management Plan

## Legend:

- ▲ Utah State Park Locations
- ★ Resource Management Plan Study Locality



This page intentionally left blank.

# **Acknowledgements**

## **Gunlock State Park Focus Group Participants**

Matt Burgess, Utah Division of Wildlife Resources, Washington County  
Cimarron Chacon, Bureau of Land Management – St. George  
Roy Hafen, Pleasure Boater

John Ibach, Utah Division of State Parks and Recreation – Snow Canyon  
Joe Johnson, Bass Fisherman

Kent Larson, Personal Watercraft Rider

Jay Leavitt, Gunlock Resident and Landowner

Laura Melling, Utah Division of State Parks and Recreation – Sand Hollow

Gary Pascoe, Utah Division of State Parks and Recreation – Quail Creek

Danny Semick, Wake Boarder

Doug Wilson, Washington County Water Conservancy District

## **Other Participants**

Shannon Peterson, Planner, Utah Division of State Parks and Recreation

Rob Quist, Southwest Region Manager, Utah Division of State Parks and Recreation

John Schjif, Utah Division of Wildlife Resources

Rock Smith – Research Consultant, Utah Division of State Parks and Recreation

Gordon Topham, Deputy Director Operations, Utah Division of State Parks and Recreation

Susan Zarekarizi, GIS Coordinator, Utah Division of State Parks and Recreation

This page intentionally left blank.

# List of Figures and Maps

## Figures

Figure 1: Gunlock State Park Monthly Climate Summary .....	16
Figure 2: Gunlock State Park Annual Visitation 1980-2002 .....	17
Figure 3: Gunlock State Park Average Monthly Visitation .....	17
Figure 4: Cities Near Gunlock State Park .....	18

## Maps

Plate 1: Gunlock State Park RMP Study Area .....	3
Plate 2: Gunlock State Park General Ownership .....	31

This page intentionally left blank.



# Table of Contents

<b>Introduction</b>	
Acknowledgements.....	5
List of Figures and Maps .....	7
<b>Executive Summary.....</b>	<b>11</b>
<b>Resource Management Plan Purpose and Process</b>	
Purpose of the Plan .....	13
The Planning Process.....	13
<b>About the Park</b>	
Park History .....	15
Physical Setting and Facilities .....	15
Climate.....	16
Park Visitation .....	17
Relationship to the Community and Surrounding Areas .....	17
Demographics and Socioeconomic Impact.....	18
<b>Park Resources</b>	
Geological Resources.....	19
Biological Resources .....	19
Cultural Resources .....	20
<b>Focus Group Results</b>	
Question 1-4.....	21
Questions 5-11 .....	22
Questions 6-15 .....	23
Additional Issues.....	23
<b>Conclusion .....</b>	<b>25</b>
<b>References.....</b>	<b>27</b>
<b>Maps.....</b>	<b>29</b>
<b>Appendices.....</b>	<b>33</b>
Appendix A – Focus Group Questions	
Appendix B – Summary of Public Comments and Responses	

This page intentionally left blank.

# Executive Summary

In September 2004, planning staff met with divisional and park staff involved with Gunlock State Park in a sideboard meeting. During this meeting, the Division solicited the names of community members and various users with an interest and expertise in the park to serve as members of a planning team with the goal of attaining recommendations for a Resource Management Plan. Eight individuals were selected to serve on the planning team and two representatives from the Division served as staff to the team.

This plan utilized a focus group interview format. Focus Groups are not a new idea, but are a new tool for the Division's Planning section. Focus groups utilize the knowledge and opinions of a small, six to ten participants, group that possess knowledge and interest in the topic in question, Gunlock State Park for this instance. The participants were provided background information on the park and then asked a series of questions. The questions were developed from issues/topics that were discussed in the staff sideboard meeting. Recommendations/comments are then taken from the group's comments.

The plan provides recommendations founded upon the results from the two focus group interviews. This information will help guide future management of Gunlock State Park. The results focus on the following:

- X Gunlock State Park should continue to be managed by Utah State Parks
- X Desired facilities included designated, hardened campsites, trails, group sites with pavilions, and additional trash receptacles.

- X Investigate the possibility of a Park-specific pass.
- X Gunlock needs at least one full-time employee, preferably law enforcement
- X Correct Park information is more important than promotion.
- X Desired recreational activities include: fishing, boating, water skiing, hiking, biking, and art classes.
- X Provide for overnight camping.
- X The Park should only acquire land if it is to enhance recreation or protect experiences.
- X Investigate alternative power sources (solar and hydro-electric).
- X Consider gating the Park for safety and resource protection.

These recommendations are geared towards improving and expanding the park's recreational opportunities, protecting its resources and providing the visitor with a safe and enjoyable experience. Achievement of these objectives will require the continued support of users, legislative and community leaders, and the Utah Division of State Parks and Recreation.

This page intentionally left blank.

## **Resource Management Plan Purpose and Process**

### **Purpose of the Plan**

This Resource Management Plan is intended to help guide the Utah Division of State Parks and Recreation's stewardship obligations for Gunlock State Park. Planning for the park is essential given the increase in visitation to the park in the past ten years and the projected short and long-term growth of the local population.

Gunlock State Park is a popular recreation site for the residents of Gunlock, Hurricane, Ivins, Santa Clara and southwestern Utah. The park also draws visitors from the Las Vegas, Nevada area and the Beaver Dam and Littlefield areas of Arizona. Visitation to the park has increased from 67,334 in 1993 to 82,655 in 2003 with a high visitation of 100,172 in 1999.

Gunlock reservoir offers year-round boating, water sports and quality fishing for bass and catfish. Gunlock State Park is located in scenic red rock country. A mild winter climate makes Gunlock State Park a year-round destination

Issues included staffing, recreational activities, facilities, and park fees. Recommendations/suggestions were arrived at by consensus of group opinion. Issues will be covered later in this document.

### **The Planning Process**

Planning for a recreational resource such as Gunlock State Park is required for the protection of this unique resource and to ensure the efficient and effective expenditure of state and private funds. It is necessary for the long-term protection and public enjoyment of Gunlock's many opportunities and resources. This Resource Management Plan (RMP) is required by the

Utah State Legislature and the Board of the Utah Division of State Parks and Recreation to guide short and long-term site management and capital development.

The Utah Division of State Parks and Recreation's long-range strategic plan, Vision 2010, outlines the required planning actions needed to effectively meet customer recreational and leisure needs for the next five to 10 years. Vision 2010 identifies resource management planning as essential to the effective administration and operation of all parks in the agency's system. Under the guidance of Vision 2010, each RMP is developed around one core concept: meeting the needs and expectations of customers, visitors and the citizens of the state of Utah while protecting each park's unique resource base. In short, the process is "customer driven and resource-based."

The planning process recommends limits of acceptable change or modification, and a future vision for the park. Specifically, the process: (1) recognizes impacts will result from use and enjoyment of the site; (2) defines how much and what types of impacts may be accommodated while providing reasonable protection of the resources for future visitors; (3) incorporates values of resource sustainability, quality facilities, education and interpretation for visitors; and (4) seeks to determine the conditions under which this can be attained.

In September 2004, planning staff met with divisional and park staff involved with Gunlock State Park in a sideboard meeting. During this meeting, the Division solicited the names of community members and various users with an interest and expertise in the park to serve as members of a planning team with the goal of attaining recommendations for a Resource Management Plan. Team members were

selected for a variety of reasons ranging from technical expertise to interest in the park. All team members participated on a voluntary basis and expressed a willingness to sacrifice a portion of their time and expertise to the process. Eight individuals were selected to serve on the planning team and two representatives from the Division served as staff to the team.

This plan utilized a focus group interview format. Focus Groups are not a new idea, but are a new tool for the Planning section. Focus groups utilize the knowledge and opinions of a small, six to ten participants, group that possess knowledge and interest in the topic in question, Gunlock State Park for this instance. The participants were provided background information on the park and then asked a series of questions. The questions were developed from the issues/topics discussed in the staff sidebar meeting. Recommendations/comments are then taken from the group's comments.

## About the Park

### Park History

The Division of State Parks and Recreation purchased 548.5 acres of land on June 3, 1969 from the Bureau of Land Management (BLM). Gunlock Reservoir and dam was built and dedicated in November 1970. In the 1970-71 fiscal year the Division built a boat launching ramp and parking area at Gunlock State Park (DNR, Status Report). The town of Gunlock, located approximately two and one-half miles north of the reservoir, was named after its first settler, "Gunlock Bill" a.k.a. "Gunshot Will" Hamblin (Doc#1340P).

Gunlock State Park was established in 1970. Since that time, the Park has been attracting ever-increasing numbers of visitors. Gunlock is a popular water recreation area in Washington County, providing opportunities for power and sail boating, waterskiing, warm-water game fishing (bass and crappie), swimming, sun bathing, and wind surfing.

### Physical Setting and Facilities

Gunlock State Park is located in Washington County, in the southwest corner of Utah, 26 miles northwest of St. George, 90 minutes from Cedar City, 328 miles southwest of Salt Lake City, and approximately two hours from Las Vegas.

The area immediately surrounding the reservoir consists of lava flows (on the east side) from the ancient three million year old Triassic period and the more recent Holocene period. The west side of the reservoir is composed of pinion and juniper trees and cliffs of red-pink (occasionally white) fine rounded quartz sandstone formed in the middle to late Jurassic age (160 – 170 million years ago) with intermixing of black iron deposits. North and south along the Santa Clara River (that feeds Gunlock

Reservoir) are bits of pottery, arrowheads and Petroglyphs from nomadic tribes that once lived along the Santa Clara River (Doc#1340P).

The reservoir was formed with the construction of an earthen dam in 1970. Its elevation is 3,600 feet; Gunlock reservoir is 1.8 miles long, 0.7 mile wide, 115 feet deep, has a surface area of 266 acres, and 5.1 miles of shoreline. The reservoir has a volume capacity of 20,680 acre-feet, with a conservation pool of 2,300 acre-feet (Division of Water Quality).

The area's facilities include a boat-launching ramp, gravel parking area, wooden boat docks, and two vault toilets.

**Climate**

Gunlock State Park sits at an elevation of 3600 feet. The climate is characterized by low precipitation and humidity, with hot summers and cool winters.

Temperature variations are extreme, ranging from 110° F in the summer to -20° F in the winter. Average rainfall is approximately 7 inches per year, the majority of which occurs in late summer and during winter months.

Figure 1

<b>Gunlock State Park, Utah (Monthly Climate Summary)</b>													
	Jan	Feb	Mar	Apr	May	Jun	Jul	Aug	Sep	Oct	Nov	Dec	Annual
Average Temperature (F)	39.4	44.5	50.1	56.9	65.9	75.9	81.6	79.8	72.3	60.7	47.2	39.7	59.5
Average Total Precipitation (in.)	1.44	1.66	1.69	0.85	0.60	0.34	0.76	1.08	0.84	1.02	1.02	1.06	12.37
Average Total Snowfall (in.)	2.2	0.8	1.0	0.1	0	0	0	0	0	0.1	0.1	1.0	5.4

Temperature values based on averages/sums of daily data. Information is computed from available daily data during the 1971-2000 period, NCDC  
 Precipitation and snowfall values based on 7/ 1/1948 to 5/31/2005 period, <http://www.wrcc.dri.edu/cgi-bin/cliRECTM.pl?ut3506>



### Park Visitation

Gunlock State Park's visitation has been trending upwards since 1990, despite dips in visitation in 1993, 1995, 1997, and 2000. Visitation increased 129.9% from 36,468 visitors in 1990 to 83,830 in 2002.

Most visits to Gunlock State Park occur between May and August (58 percent of the total visitation). August, with an average 10,549 visitors, is the busiest month, accounting for 15 percent of the yearly total visitation. July is the second busiest month with 10,423 visitors. June is next with 10,374.

The number of visits to the park drops off due to cooler weather October through March. These six months account for twenty-six percent of average annual visitation. Visits begin to increase in April as the weather improves, but increase dramatically beginning in May.

Figure 2

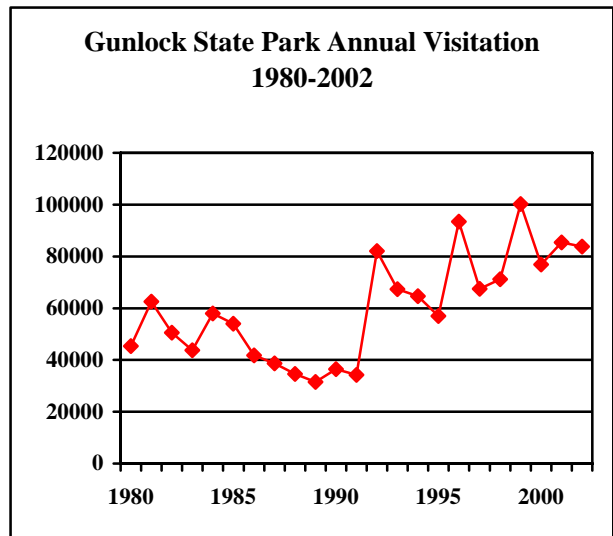
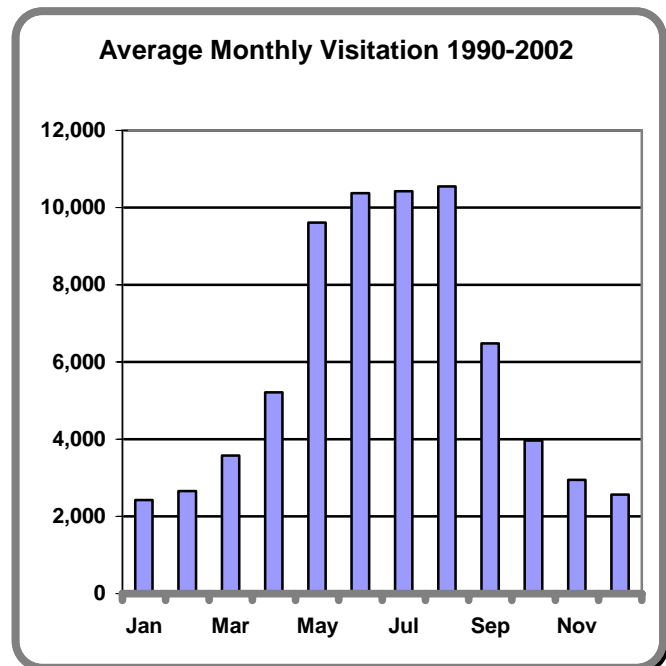


Figure 3



## Relationship to the Community and Surrounding Area

Traces of the prehistoric Archaic and Anasazi cultures have been found in the Gunlock area, and the Santa Clara and Virgin Rivers provided an important base for the development of Southern Paiute life (Thatcher, L.).

The early historic inhabitants of the area were composed of several branches of the Paiute Tribe, which included the Parrusits, Tonaquintits, and Shivwits. The first European arrivals to the area were a 10-man exploration team from New Mexico led by two Franciscan priests -- Fathers Dominguez and Escalante -- who kept detailed diaries on the geography, plant life, and indigenous peoples of southern Utah (web source).

The Division of State Parks and Recreation purchased 548.5 acres of land on June 3, 1969 from the Bureau of Land Management (BLM). Gunlock Reservoir and dam was built and dedicated in November 1970. In the 1970-71 fiscal year the Division built a boat launching ramp and parking area at Gunlock State Park.

### Demographic and Socioeconomic Information

According to the Utah Population Estimates Committee, as of 2004 there were 117,316 people, 29,939 households, and 34,915 families residing in Washington County. The population density was 37.2 persons per square mile. There were 40,148 housing units in 2000.

The Washington County School district is the county's single largest employer followed by Intermountain Health Care, Wal-Mart, Dixie College, and St. George City.

Figure 4

<u>Cities and Towns near Gunlock State Park</u>		
City	Population	Distance from Park
St. George	59,780	26 miles northwest
Cedar City	13,500	78 miles northeast
Washington	11,521	31 miles southeast
Hurricane	9,748	44 miles southeast
Ivins	6,404	14 miles southeast
Santa Clara	4,630	37 miles southeast

- Jobs.utah.gov
- Mapquest.com

## **Park Resources**

The planning process calls for an inventory and analysis of park resources. It is essential that management decisions affecting the park's natural environment be made upon the foundation of reliable scientific information. This section provides an analysis of Gunlock's geological, biological, and cultural resources.

### **Geological Resources**

The Gunlock area is bounded geographically by the Basin Range province to the west and the Colorado Plateau to the east. The main geologic formations found within the park include: Jurassic Navajo Sandstone, Middle Jurassic Carmel formation, Cretaceous conglomerates, Bentonitic beds, Cretaceous Iron Springs formations, and Quaternary basalts and sediments. The cliff face on the east side of the park was formed by the north-south trending Gunlock fault. The beautiful bedrock forming the dam's spillway is Navajo sandstone (Heintze, Anderson and Embree).

### **Biological Resources**

The park supports an assortment of plants and animals in a variety of habitats, including aquatic habitats that are important to a number of fish species.

### **Flora**

The vegetation communities of Gunlock State Park are comprised of shadscale, greasewood, saltbrush, sage-grass, bitterbrush-mountain mahogany, pinyon juniper, mahogany, grass-forbs, pine, aspen, spruce-fir, oak, maple, prickly pear, and cholla cactus.

The flora found in the reservoir is quite diverse, dominated by green algae, diatoms, and gold algae. Such diversity indicates a healthy aquatic ecosystem.

Plants found in and around the Gunlock area include virgin lomatium, silver reef milkvetch, Arizona bladderpod, purple-spined hedgehog cactus, Baird's camissonia, and Aven Nelson's phacelia.

There are three plant species with endangered status located in the Gunlock area. These three are: Shivwits or Shem milkvetch, holmgren milkvetch and dwarf bearclaw poppy.

### **Fauna**

Gunlock State Park and the surrounding area provide habitat for a variety of species. Birds that may inhabit the area include Abert's towhee, blue grosbeak, Costa's hummingbird, common yellowthroat, and summer tanager.

Reptiles may include the common kingsnake and the coachwhip. Other species include Merriam's kangaroo rat, the northern leopard frog, and the white-belted ringtail dragonfly.

In addition to those listed above, there may be animal species of special concern found in the area. These species should receive consideration in context of new activities and/or development.

They include two species of fish, the flannelmouth sucker and virgin spinedance, both listed on the state's wildlife list as species of concern.

Species receiving special management under a conservation agreement in order to preclude the need for federal listing include two reptiles: the common chuckwalla, and

western banded gecko; a fish, the desert sucker, the Arizona toad, and the American white pelican.

Federally listed or candidate species under the Endangered Species Act that may be found in the area are the woundfin fish, relict leopard frog, and desert tortoise.

### **Archeological Resources**

There has not been a project survey completed within the park boundary, but any additional development will require surveys of the impacted locations.

## Issues and Recommendations

Two Focus Group interviews were conducted at Snow Canyon State Park during June and July of 2005.

A number of issues ranging from facility development needs to recreational activities were addressed in the plan. Also addressed were issues relating to staffing, funding and operations, and user conflict. These issues were formed in a sideboard meeting with park and planning staff present. Issues were recommended for discussion and from this discussion a series on fifteen questions were drafted for the focus group. These questions were reviewed by planning and field staff and revised prior to being administered to the focus group participants.

A number of constraints (e.g. available funding, sufficiency of staff, facility location and design, and federal regulations, etc.) will need to be addressed prior to issue resolution. Team members, planning staff and division experts identified some of the limiting factors that may hinder implementation of a specific team recommendation.

The following are issues and recommendations developed from the focus group participants' responses to the issue questions. A complete list of responses is provided in Appendix A. The team's recommendations were arrived at by consensus of opinion.

The recommended facility development is subject to change based on available funding. Multiple sources of funding are available for different portions of the overall project, but timing of funds availability is not predictable. In order to expedite development and maximize fiscal efficiency, the Planning, Facilities and Construction section will be responsible for implementing the recommendations in a manner that utilizes available funding opportunities.

### **Issue: Current activities at Gunlock State Park**

Focus group participants were asked if they visit Gunlock State Park and what activities they participate in at the park.

#### **Recommendation:**

All focus group participants said that they visit the park. Activities included fishing, swimming, family outings, water- skiing, wakeboarding, waterfowl hunting, and hiking. Participants stated that they want these activities to continue at the park.

### **Issue: State Park status**

Focus group participants were asked if Gunlock should remain a State Park.

#### **Recommendation:**

The team unanimously felt that Gunlock State Park should remain a State Park, stating that they could not see anyone else managing the area but State Parks.

### **Issue: Facility Development**

Focus group participants were asked what facilities they would you like to see at Gunlock State Park.

#### **Recommendation:**

The team stated that, as a whole, they would like to see the park remain relatively unchanged with the exception of a few improvements. Desired facilities included designated, hardened campsites with water and electricity, trails, group sites with pavilions, and additional trash receptacles. The team expressed that facilities should be built to handle and withstand projected future growth.

#### **Alternative:**

Several team members stated the desire for primitive camping with designated campsites, water, and vault toilets.

### **Issue: Park Fees**

Focus group participants were asked how much they are willing to pay for access to Gunlock State Park.

**Recommendation:**

Focus Group participants felt that current fees seem fair. They recommended that fees be raised to help pay for operation as the park is developed. Participants also voiced interest in a park-specific pass.

**Issue: Park Staff**

Staffing was determined to be the most important issue during this process. The group was asked if a full-time employee is needed at Gunlock State Park. Currently Gunlock is managed from Sand Hollow State Park.

**Recommendation:**

Participants stated that Gunlock needs fulltime law enforcement presence to cover operational hours during recreation season to solve existing problems. The Park also needs seasonal time for staff presence and maintenance. It was also recommended that the Park should actively seek volunteer labor.

**Issue: Promotional Efforts**

Focus group participants were asked if the park should be promoted more in an effort to increase visitation.

**Recommendation:**

Team members felt that currently, correct information is more important than promotion. They recommended the Park have its own informational brochure and that promotional efforts should be for appropriate traditional uses and experiences.

**Issue: Recreational Activities**

Focus group participants were asked what type of recreational activities should be provided at the Park.

**Recommendation:**

The team listed several desired recreational activities. Among those listed were: fishing, boating, water skiing, hiking, biking, and art classes. They also felt that waterfowl

hunting should be studied for feasibility within the Park.

**Issue: Day use v. Camping**

Currently overnight use is allowed at Gunlock State Park. Participants were asked if the park should continue to allow camping.

**Recommendation:**

Group members were split on only allowing day use in the park. It was recommended that overnight camping be provided at Gunlock State Park. The team stated they would like designated, hardened campsites located away from the lakeshore with restrooms, picnic tables, grills, gravel roads, and parking. It was also recommended that providing water, electricity and sewer be investigated, and developed if possible.

**Issue: User Conflict**

Focus group participants were asked if conflict exists between different user groups and if conflict exists how to reduce it.

**Recommendation:**

The team felt that there was little conflict between different user groups at the Park. They did point out that conflicts could occur between personal water crafts (PWCs) and ski boats with fishermen and swimmers. The team went on to recommend that if greater conflicts develop, then a focus group should be formed to study possible solutions. It was discussed that there may be seasonal conflicts between hunters and other user groups. As a possible solution, seasonal closures or alternate routing on trails should be considered to avoid conflicts during hunting season.

**Issue: Golf Course Construction**

Team members were asked what effect the possible downstream construction of a golf course would have on the park.

**Recommendation:**

The team saw the nearby construction of a golf course as a positive development, stating that it might help to increase visitation. They felt that it shouldn't have any negative impact on the Park.

**Issue: Land Acquisition**

The focus group participants were asked if the park should try to acquire surrounding land for park expansion.

**Recommendation:**

It was recommended that land be acquired only if it is to enhance recreation or protect experiences. The team would like to see the Park try to acquire more shoreline. They listed other areas (see Appendix A).

**Issue: Alternate Power Sources**

The team was asked if the park should consider photovoltaic power and/or a hydro generator to generate electricity in light of the expense of hooking to the electrical grid.

**Recommendation:**

The team felt that the Park should investigate these sources of alternate power. They also recommended the Park try to work with the town of Gunlock to complete a power "loop" that would supply electricity to the Park and offer a second source of power for the town of Gunlock.

**Issue: Conservation Pool**

Participants were asked if, and how, the park should establish a conservation pool.

**Recommendation:**

It was determined that a conservation pool already exists at the Park. The conservation pool is 2,300 acre-feet.

**Issue: Concessions**

The focus group was asked if concessions should be sold in the park.

**Recommendation:**

Team members recommended that the Park should be open to the possibility, but that actual demand for concessions may be too low. They stated that if concessions were to

be sold that no permanent concession structures or facilities are to be built.

**Issue: Boating Capacity Limit**

Participants were asked if the park should enforce boating capacity limits.

**Recommendation:**

The team recommended that use be monitored and that capacities be considered if future use dictates. If needed, capacities will be implemented to preserve quality of recreation experiences and safety. Capacities would be set using Utah State University study, the Division's 5-year boating plan, and other Park-specific studies.

**Additional Issues:**

The team brought up the issue of Park access. Team members stated that there should be gates to control access as per Division guidelines (normal hours of operation), for safety and resource protection.

State Parks will consider the rights of adjacent landowners in light of the recommendations of this plan. Grazing rights will be considered in the event that fencing is a possibility.

A number of criteria – feasibility, costs, available funding, availability of staff, etc. – will need to be considered in the planning, development and implementation of each recommendation. Many of the team recommendations are conceptual in nature. The Division's Planning, Facilities and Construction Section will take these recommendations and work with a designated architectural/engineering firm to develop a formal design and construction program when funding becomes available. During the transition from concept to design, conceptual modification may be required to feasibly implement specific recommendations.

This page intentionally left blank.



# Conclusion

This plan is a blueprint to help implement the focus group's recommendations. As such, it outlines the initial steps to be taken in concert with park visitors, local communities, and other interested users to: properly develop facilities to meet diverse visitor needs; ensure adequate staffing and funding; protect the natural resources of the park; enhance the park's impact on the community, and the state and local economies; and educate visitors and community members about the park and its resources.

The plan's recommendations effectively address the current needs for staffing, facility development, resource protection, park operations, and land management. However, it is crucial that adequate funding be received to implement these goals and accommodate visitor needs. The plan's success is dependent upon the continued support of the focus group participants and the community as a whole. Park staff must continue their efforts to support park improvements, preserve park resources, interact with local communities, and strive to meet the expectations of park visitors in the midst of a rapidly growing community of recreation-oriented citizens. The recommendations contained within this plan were based upon an open and collaborative process. It is imperative that this collaborative spirit continues as the plan's components are implemented.

It is also imperative that the document be reviewed on a regular basis to ensure its viability, relevance, and usefulness. This document has sufficient flexibility to be amended in response to changing resource conditions, visitor needs and expectations, community needs, and agency priorities. Such amendments may occur under the

auspices of the Division of State Parks and Recreation. Any such changes will include input from park visitors, local citizens, community leaders, park management, and others with interests relevant to the operation and maintenance of the park.

This page intentionally left blank.

## References

- Housing Council Assistance - HAC. (2005). Internet Website.  
<http://www.ruralhome.org/pubs/hsganalysis/boomtowns/washington.htm>
- McCarthy, William Robert. (1959). Stratigraphy and Structure of the Gunlock-Motoqua Area, Washington County, Utah.
- National Climatic Data Center – NCDC. (2005). Internet Website.  
<http://www.ncdc.noaa.gov/oa/ncdc.html>
- State of Utah. Document # 1340P, Gunlock. (Salt Lake City, UT: DNR, Division of State Parks and Recreation).
- State of Utah. Park Status Report Summary, Gunlock State Park. (Salt Lake City, UT: DNR, Division of State Parks and Recreation).
- State of Utah. (2005). Sensitive Species List. (Salt Lake City, UT: DNR, Division Wildlife Resources).
- State of Utah. (2005). Utah Lakes and Reservoirs, Gunlock Reservoir. (Salt Lake City, UT: DNR, Division of Water Quality).  
<http://www.waterquality.utah.gov/watersheds/lakes/GUNLOCK.pdf>
- Thatcher, Linda. (2005). Internet Website.  
<http://www.media.utah.edu/UHE/w/WASHINGTONCT.html>
- University of North Carolina, Chapel Hill. (2005). Internet Website.  
[http://www.unc.edu/~kgstewar/web\\_pages/laramide.html](http://www.unc.edu/~kgstewar/web_pages/laramide.html)
- U.S. Department of the Interior, U.S. Geological Survey. Hintze, Lehi F., Anderson, Ernest R., Embree, Gleen F. (1994). Geologic Map of The Motoqua and Gunlock Quadrangles, Washington County, Utah.
- Western Regional Climate Center – WRCC. (2005). Internet Website.  
<http://www.wrcc.dri.edu/cgi-bin/cliRECTM.pl?ut3506>
- Wikipedia. (2005). Internet Website  
<http://en.wikipedia.org/wiki/Tertiary>

This page intentionally left blank.

# Maps

Gunlock State Park and Vicinity - General Ownership

This page intentionally left blank.

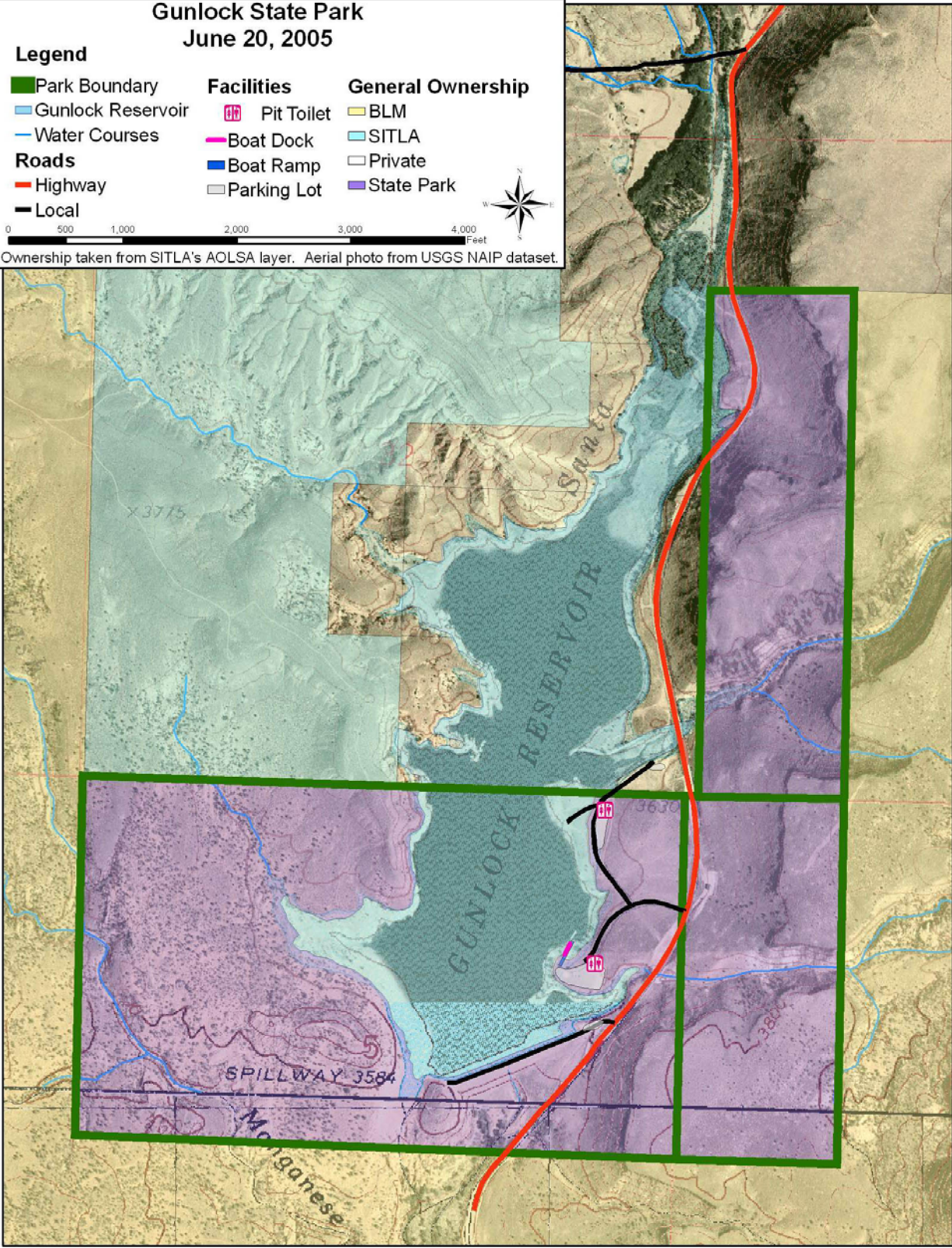
# Gunlock State Park June 20, 2005

## Legend

Park Boundary	<b>Facilities</b>	<b>General Ownership</b>
Gunlock Reservoir	Pit Toilet	BLM
Water Courses	Boat Dock	SITLA
<b>Roads</b>	Boat Ramp	Private
Highway	Parking Lot	State Park
Local		

0 500 1,000 2,000 3,000 4,000 Feet

Ownership taken from SITLA's AOLSA layer. Aerial photo from USGS NAIP dataset.



This page intentionally left blank.



# Appendices

Appendix A: Focus Group Results

Appendix B: Summary of Public Comments and Responses

This page intentionally left blank.

## **Appendix A – Focus Group Results**

### **Gunlock Resource Management Plan Focus Group Meeting #1**

Question #1:

**Do you currently use/visit Gunlock State Park?**

**Please describe what activities you participate in while at Gunlock State Park.**

- Fishing, swimming, family outings
- Fishing, waterfowl hunting
- Waterskiing, water storage for irrigation (water district)
- Wakeboarding
- Bass, crappie fishing, bass tournaments
- Cliff diving, hiking, playing on sandstone
- Grazing is still allowed

Question #2:

**Should Gunlock remain a state park?**

**Does the park have public/community support?**

- Yes, most people only know of it as a state park
- Expand what's there. Need to get community to help maintain grounds or police other visitors
- Can not see anyone else managing, but state parks
- Need the enforcement and control of use that state parks offers
- Most visitors seem to be glad that state parks is managing, but want something for their money – visitors are willing to pay entrance fee
- Park had heavy use for many years; in past development dollars went somewhere with more bang for the buck, but now with growth in area Gunlock may be even more important as a niche recreation provider; need to be proactive before use is out of hand
- May become the only non-urban recreation park in area – provide outdoor experience
- Safety issues – State Park staff there to enforce rules & policies – help provide a safe environment

Question #3:

**What facilities would you like to see at Gunlock?**

- Likes it as it is, possibly improve existing facilities (roads, add water)
- Designated, hardened campsites
- The park needs fulltime, law enforcement employee(s) present – more employees
- Maintain rural feeling, but harden sites and develop circulation strategy
- Trails – non-motorized, circumnavigate reservoir – Three Rivers Trail master plan would bring trail to Gunlock from Ivans (should plan for this)
- Provide water and electricity
- Demand from residents and out-of-state will increase so state parks will need to provide management necessary for future
- Group facilities – pavilions

- Camp host site for round-the-clock presence – need telephone, water, electric and sewer
- Do not overbuild
- Perhaps more trash containers
- Community/family oriented
- Site plan for whole park – do not just build around existing facilities (move or change if necessary, old facilities were placed to solve problems – no planning)
- Need anti-littering signs and more enforcement
- Circulation of spaces – smart design, circulation should flow, ex. don't put a noisy activity/staging area near camping...

Question #4:

**How much are you willing to pay for access to Gunlock?**

- Current fees seem fair
- Should maybe reduce fees to encourage walk-ins or bicycles
- Higher fees may decrease some problems such as partying and littering
- Park specific season pass?
- As park is developed raise fees to pay for operation

Question #5:

**Does Gunlock need a full-time employee? (Currently Gunlock is managed from Sand Hollow State Park)**

- Most important issue is lack of staffing
- Need fulltime enforcement presence to cover operation hours during recreation season to solve existing problems
- Seasonal time for presence and maintenance (Deputy Ranger)
- Seek volunteer labor
- Setup and use camp hosts/site host (part-time)
- Instead of camp hosts, develop seasonal housing on park
- Two full-time and a seasonal if possible

Question #6:

**Should the park increase promotional efforts to increase visitation?**

- Promotion should be for appropriate, traditional uses and experiences
- Promote use during slower periods
- Gunlock should have its own park brochure
- Phone line specifically for calls about Gunlock
- Currently correct information is more important than promotion
- Promote that the park is a small semi-primitive area: we (SPs) want to provide a “wilderness experience”

Question #7:

**What type of recreational activities should be provided at the park?**

Fishing, boating, water skiing, biking, art classes, waterfowl hunting – hunting opportunities (should be studied; a developed trail around the lake would limit/prohibit hunting), hiking trail

## **Gunlock Resource Management Plan Focus Group Meeting #2**

Question #1:

**Do you currently use/visit Gunlock State Park?**

**Please describe what activities you participate in while at Gunlock State Park.**

- Fishing, swimming, family outings
- Fishing, waterfowl hunting
- Waterskiing, water storage for irrigation
- Wakeboarding
- Bass, crappie fishing, bass tournaments
- Cliff diving, hiking, playing on sandstone
- Group activities (church, youth)

Question #2:

**Should Gunlock remain a state park?**

**Does the Park have public/community support?**

- Yes, most people only know of it as a state park
- Expand what's there. Need to get community to help maintain grounds or police other visitors
- Can not see anyone else managing, but state parks
- Need the enforcement and control of use that state parks offers
- Most visitors seem to be glad that state parks is managing, but want something for their money
- Park had heavy use for many use; in past development dollars went somewhere with more bang for the buck, but now with growth in area Gunlock may be even more important as a niche recreation provider; need to be proactive before use is out of hand
- May become the only non-urban recreation park in area

Question #3:

**What facilities would you like to see at Gunlock?**

- Likes it as it is, possibly improve existing facilities (roads, add water)
- Designated hardened campsites
- The park needs fulltime present – more employees
- Maintain rural feeling, but harden sites and develop circulation strategy
- Trails – non-motorized, circumnavigate reservoir (there is some private property) – Three Rivers Trail master plan would bring trail to Gunlock from Ivans (should plan for this)
- Provide water and electricity
- Demand from residents and out-of-state will increase so state parks will need to provide management necessary for future
- Group facilities – pavilions
- Individual and group day-use sites.
- Camp host site for round-the-clock presence – need telephone, water, electric and sewer
- Do not overbuild
- Perhaps more trash containers. More trash containers, if staff and funding is adequate to empty them

- Community oriented
- Site plan for whole park – do not just build around existing facilities (move or change if necessary, old facilities were placed to solve problems – no planning)
- Need anti-littering signs and more enforcement
- Facilities should be built that will handle and withstand expected growth
- Approach water users and county to see if they will fund or help fund trash pickup

Question #4:

**How much would you be willing to pay to use Gunlock?**

- Current fees seem fair
- Should maybe reduce fees to encourage walk-ins or bicycles
- Higher fees may decrease some problems such as partying and littering
- Park specific season pass?
- As park is developed raise fees to pay for operation

Question #5:

**Does Gunlock need a full-time employee? (Currently Gunlock is managed from Sand Hollow State Park)**

- Most important issue is lack of staffing
- Need fulltime enforcement presence to cover operation hours during recreation season to solve existing problems
- Seasonal time for presence and maintenance
- Seek volunteer labor
- Setup and use camp hosts
- Instead of camp hosts, develop seasonal housing on park

Question #6:

**Should the park increase promotional efforts to increase visitation?**

- Promotion should be for appropriate traditional uses and experiences
- Promote use during slower periods
- Gunlock should have its own park brochure
- Phone line specifically for calls about Gunlock
- Currently **correct information** is more important than promotion, correct expectation

Question #7:

**What types of recreation should be provided at the park?**

- Fishing, boating, hiking, biking, art classes, water-fowl hunting (should be studied)

Question #8:

**Should the park be day-use only or should camping be allowed? If so, what type of camping? Should utilities be provided?**

- Yes, primitive, developed camping, away from lakeshore with minimal facilities (restrooms, tables, grills, gravel roads and parking)
- Investigate providing water, electricity and sewer, and develop if possible
- Individual and group sites as possible

Question #9:

**Does conflict exist between user groups?**

- Seasonal conflicts between hunters and others (maybe)
- Between pwc's and ski boats with fishermen, swimmers

**If so, how do we reduce conflict between groups?**

- If greater conflicts develop, form focus group to study solutions
- Consider seasonal closures on trails or alternative routing to avoid conflicts during hunting season

Question #10:

**What effect, if any, would the downstream construction of a golf course have on the park?**

- May increase visitation
- Should not have any negative impact on the park

Question #11:

**Should the park acquire more land?**

- Area below the reservoir or cooperatively manage with BLM for recreation (possibly camping or day-use). R&PP leases may tie up some land to maintain for recreation
- Piece of SITLA land near PWC ramp
- Possible trade lands on eastside of road for more desirable lands
- Try to get more shoreline
- Only acquire land if it is to enhance recreation or protect experiences
- We will not simply take land – seize land from private owners; only if acquisition is mutually beneficial for the buyer and seller

Question #12:

**Due to the expense of hooking to the electrical grid, should the park consider photovoltaic power and/or a hydro-generator to generate electricity for the park?**

- Should investigate these sources of power (conservation release from reservoir is 3 cfs)
- Work with town of Gunlock to complete power “loop” that would supply to park and offer second source to Gunlock

Question #13:

**Should a conservation pool be established? If so, how?**

- Shannon will follow-up with Doug to see what conservation pool actually is; CP is so low that boating recreation is minimal at that level

Question #14:

**Should concessions be sold? If so, what type?**

- Should be open to it, but demand may be too low. No permanent concession structures or facilities

Question #15:

**Should the park enforce boating capacity limits?**

- Use will be monitored and capacities will be considered if future use dictates, for quality of recreation experience and **safety**, using USU study, Division 5-year boating plan, other park specific studies

Additional Issues:

**Access**

- Gates to control access as per Division guideline, for safety and resource protection
- Perimeter fencing to help keep cattle out of the park...



## **Appendix B – Summary of Public Comments and Responses**

### **Comment: Have as much as possible for a person in a wheelchair to enjoy (one comment)**

A comment received from a person with multiple sclerosis (MS) stated a desire that Gunlock State Park have as much as possible for a person in a wheelchair to enjoy.

### **Response:**

Any new facilities and improvements to existing facilities at Gunlock State Park will be ADA-compliant in accordance with federal guidelines/standards.

### **Comment: Disagree with developed camping (one comment)**

A comment received from an adjacent landowner stated that they disagree with putting water, electricity, and hardened campsites on the park due to the rustic nature of the park and a feeling that these improvements would detract from an unrestricted experience.

### **Response:**

Group members were split between only allowing day use and overnight camping in the park. It was recommended that overnight camping be provided at Gunlock State Park (page 22). The team stated they would like designated, hardened campsites located away from the lakeshore with restrooms, picnic tables, grills, gravel roads, and parking. It was also recommended that providing water, electricity and sewer be investigated, and developed if possible. By providing designated, hardened campsites future impacts to the shoreline can be prevented.

### **Comment: Fencing Park Boundary (one comment)**

A comment received from an adjacent landowner stated it would seem difficult to fence so that there was still good access to the lake considering that the park boundary only includes the southern one-third of the reservoir.

### **Response:**

The team brought up the issue of Park access. Team members stated that there should be gates to control access as per Division guidelines (normal hours of operation), for safety and resource protection (page 23).

State Parks will consider the rights of adjacent landowners in light of the recommendations of this plan. Grazing rights will be considered in the event that fencing is a possibility.